

Social Due Diligence Report

Project Number: 51081-002 KGZ

Draft

**KGZ: Climate Change and Disaster-Resilient Water
Resources Sector Project**

Hydro posts in Chui Zone

Social due diligence report (hereinafter referred to as "SDDR") was prepared by the Water Resources Services under the Ministry of Agriculture for the Asian Development Bank (ADB)

1. INGREDIENTS

1.1. List of contents

Contents

1. INGREDIENTS	2
1.1. List of contents	2
1.2. List of tables	4
1.3. List of figures	4
1.4. List of abbreviations.....	5
2. INTRODUCTION.....	6
2.1. Project background.....	6
2.2. Sub-project area description	7
3. OBJECTIVES of SDDR REPORT	7
4. ASSESSMENT OF METHODOLOGY	8
5. SOCIAL IMPACT ASSESSMENT	8
5.1. Description of the Hydro posts in Chui Zone.....	8
5.2. Chui Oblast hydro posts	9
5.2.1. Karagailuu hydro post	9
5.2.2. Cholok-V hydro post.....	11
5.2.3. Kara kujur hydro post	13
5.2.4. Suek-Ichk Sai hydro post	15
5.2.5. Ala-Archa hydro post.....	17
5.2.6. Karakol-Iri Suu hydro post.....	19
5.2.7. Tuyuk Isyk Ata hydro post.....	21
5.3. Conclusion.....	24
6. CONSULTATION, PARTICIPATION AND DISCLOSURE OF INFORMATION	24
6.1. Summary of the Comments and Concerns Received from Affected People and other Stakeholders	28
7. GRIEVANCE REDRESS MECHANISM (GRM).....	28
7.1. Objectives of GRM	29
7.2. Grievance Redress Groups	29
7.3. Local Focal Points (LFP)	30
7.4. Sub-project Coordination Committees	30
7.5. Grievance Resolution Process.....	31
7.6. Additional mechanism.....	33
7.7. Complaint documentation	33

8. MITIGATION MEASURES DURING CONSTRUCTION	33
9. INSTITUTIONAL ARRANGEMENT AND REPORTING	34
9.1. ADB.....	34
9.2. WRS/PIU	35
9.3. PIC	35
9.4. WUAs	36
9.5. Monitoring and reporting	36
10. CONCLUSION AND RECOMMENDATION	36
10.1. Conclusions	36
10.2. Mitigation measures.....	37
11. APPENDIXES	39
11.1. LAR check list of Chui hydro post	39
11.2. List of Public consultation meetings	46
11.3. GRG establishment approvals	54
11.4. Sub-project Coordination Committee meeting.....	60
11.5. Grievance registration form.....	62
11.6. Grievance logbook.....	63

1.2. List of tables

Table 1: Square measures of land plots	9
Table 2: BoQ of Karagailuu-bulak hydro post	10
Table 3: BoQ of Cholok-V hydro post.....	12
Table 4: BoQ of Kara-kujur hydro post	15
Table 5: BoQ of Suek-Ichk Sai hydro post.....	17
Table 6: BoQ of Ala-Archa hydro post.....	18
Table 7: BoQ of Karakol-Iri Suu hydro post	21
Table 8: BoQ of Tuyuk-Isyk Ata hydro post	23
Table 9: LFP list	30
Table 10: Grievance Redress Procedure	31

1.3. List of figures

Figure 1: Location of hydro post project	7
Figure 2: Announcement of public hearing	25
Figure 3: Screenshot of presentation on the OVOS procedure.....	26
Figure 4: Screenshot of the brochure on the Project and the OVOS procedure.....	27
Figure 5: Grievance Redress Procedure	32

1.4. List of abbreviations

AA	Aiyl Aimak - Rural administrative territorial unit in KR
ADB	Asian Development Bank
AK	Aiyl Kenesh – Rural / Village Council
AO	Aiyl Okmotu - Rural Local Self-Government
APs	Affected Person(s) (or Affected People)
CDT	Community Development Team
DD	Detailed Design
DWR	Department of Water Resources
DMS	Detailed Measurement Survey
GKR	Government of Kyrgyz Republic
GRG	Grievance Redress Group
GRM	Grievance Redress Mechanism
IEE	Initial Environmental Examination
LAR	Land Acquisition and Resettlement
LARC	Land Acquisition and Resettlement Committee
LARF	Land Acquisition and Resettlement Framework
LARP	Land Acquisition and Resettlement Plan
LFP	Local Focal Point
LGB	Local government bodies
LGRG	Local Grievance Redress Group
PC	Public Consultation
PIC	Project Implementation Consultant
PIO	Project Implementation Office at Local Level
PIU	Project Implementation Unit
PTA	Project Technical Assistance
RSU	WUA Rayon Support Unit
RVK	Rayon (District) Unit of WRS
WRS	Water Resources Services under the Ministry of Agriculture
SEMP	Site Specific Environmental Management Plan
SES	Socioeconomic Study
SCC	Subproject Coordination Committee
SDDR	Social Due Diligence Report
SPS	Safeguard Policy Statement (2009)
WUA	Water Users Association

2. INTRODUCTION

2.1. Project background

1. Kyrgyz Republic government and civil society stakeholders have identified improvements in climate change and disaster resilience in the water sector as a priority area for climate change adaptation. In this regard, ADB has initiated Technical Assistance Project Support for the design and preparation of the proposed investment project, Climate Change and Disaster-Resilient Water Resources Sector (Project).
2. For the following 3 outputs, The Water Resources Services under the Ministry of Agriculture (WRS) and the Ministry of Emergency Situations are the executive agencies of the projects, for this SDDR, the Executive agency is WRS. Daily project administration is carried out by the Project Implementation Unit (PIU). The activities of the PIU are supported by the Project Implementation Consultant (PIC)
3. This project aims to increase resilience to the adverse impacts of climate change and natural disasters that may possibly occur in water management through the modernization and efficient maintenance of infrastructure facilities. The project envisages both structural and non-structural (capacity building, demonstration)
4. As mentioned in paragraph 2 this project has project three intermediate Outcomes. These are;
 - **Output-1:** Protected and modernized irrigation infrastructure. The project will provide protection and modernization of irrigation systems to increase productivity and resilience to natural disasters on approximately 20,000 hectares of irrigated land. The project will implement measures for the modernization and construction of the main (primary and secondary, or off-farm) canals and canals at a lower level (third and fourth levels or on-farm) and related infrastructure such as mudflow protection structures, as well as check structures and diversion canals. Joint planning and development involving WRS, Water Users associations (WUA) and other key stakeholders is envisaged to ensure fair and sustainable project
 - **Output-2:** Improved irrigation system and agricultural land management. The project will strengthen the management, operation and maintenance of targeted irrigation systems, including practical drought and climate risk management to ensure the sustainability of investment benefits. As part of the participatory planning process, the project will undertake measures (i) to reorganize and strengthen the institutional capacity of WUA and WUA subgroups in order to improve their organizational efficiency, and (ii) strengthen the capacity of WRS, WUA subgroups and farmers in effective and sustainable management of irrigation system, water use and agronomy. WUA plans for on-farm and agricultural water management, including irrigation planning, cropping patterns and crop practices, will be developed, supported by capacity building including women, such as comparative field trials and farmer field days
 - **Output-3:** Strengthening national capacity in disaster risk management. The project will contribute to capacity building and equipment upgrades for disaster risk management in the water sector. Heavy machinery and related equipment for preventive and remediation work will be purchased and installed in the northern and southern centers of Ministry of Emergency Situations. This will be accompanied by the development of an asset management plan and capacity building in disaster risk management, including project planning. Hydrological posts for KyrgyzHydromet will be installed in about 20 sites in the project's target areas and an information system for enhanced data collection, processing, and flood warning will be pilot tested for improved efficiency and accuracy

2.2. Sub-project area description

5. Chui Region is the northernmost oblast the Kyrgyz Republic. This region surrounds the national capital of Kyrgyzstan, Bishkek. It is bounded on the north by Kazakhstan, and clockwise, Issyk-Kul Region, Naryn Region, Jalal-Abad Region, and Talas Region. Its administrative center is Bishkek. Its total area is 19,895 km². The resident population of the region was 974,984 as of January 2021. The region has sizeable Russian (20.8% in 2009) and Dungan (6.2% in 2009) minorities. It takes its name from the river Chuy that flows through the region.

6. The Chüy Region is divided administratively into one city of regional significance (Tokmok), and eight districts which are Alamüdün district, Chüu district, Jayyl district, Kemin district, Moskva district, Panfilov district, Sokuluk district and Ysyk-Ata district.

7. Within the Chui oblast, the hydro posts are widely located in the districts aforementioned, Please see **Figure 1**

Figure 1: Location of hydro post project



3. OBJECTIVES of SDDR REPORT

8. The main objectives of the social due diligence report prepared based on preliminary design are as follows:

- To make sure whether the proposed project alternatives will lead to involuntary resettlement requisition, land acquisition or other social impacts that will seriously affect local residents as per national legislation and ADB Safeguards Policy Statement 2009 (SPS)
- To identify and elaborate the list of project-affected people and find out how serious they are affected
- To find out the list of utilities to be relocated and reconstructed in advance of commencement of work.
- To define all key stakeholders involved in the project
- To propose mitigation measures to eliminate possible impacts and problems detected during the assessment
- To define all Local Focal Points (LFP), Grievance Redress Groups (GRG) and their contact numbers through which complaints may be made

- To summarize the information disclosure, public consultation findings and disclosure of GRG to project stakeholders
- To reflect the findings of site visits made by international and national environmental and social safeguards of PIC

4. ASSESSMENT OF METHODOLOGY

9. The following approaches and methodology have been adopted to conduct a social due diligence

- Selection of a sub-project at the pre-selection stage according to eligibility criteria related to Involuntary Resettlement category B or C only, to avoid or minimize the need for resettlement
- Visit the subproject area to conduct social surveys on where the irrigation system to be rehabilitated and assess the alternative sites proposed
- Conduct a social survey and screening based on the land acquisition and involuntary resettlement impact checklist. Please see **appendix 11.1**
- Arranging meetings with key stakeholders and taking their opinions regarding to the project realization.
- Public hearing meetings that are obliged to be arranged as per national regulations and ADB standards prior to start to work. Please see **appendix 11.2** for the list of public consultation meeting
- Develop and include into the project design and its documents (including work contract) mitigation measures and projects management arrangement

5. SOCIAL IMPACT ASSESSMENT

5.1. Description of the Hydro posts in Chui Zone

10. The hydro-meteorological capacity for monitoring, analyzing, early warning system and forecasting weather events has suffered during the post-independence period of Soviet Union due to lack of resources. Almost all hydro post stations and early warning systems were dilapidated. The situation is likely to be further aggravated due to growing and competing water demand due to population and economic growth and increased demands among agriculture, domestic water supply, and industrial and energy sectors.

11. Consultation with government and civil society stakeholders have identified improvements to climate change and disaster resilience in the water resources sector as a priority area for climate change adaptation. To mitigate future climate and disaster impacts to the livelihoods of vulnerable communities:

- i. Water access should be made more resilient to future disruptions, variability, and change;
- ii. resilience to extreme weather events such as floods and landslides should be improved; and
- iii. Institutional capacity for climate and disaster risk monitoring, management, and response should be strengthened.

12. To meet these challenges, ADB launched a project to strengthen the resilience of the water resources sector to floods, landslides, and droughts in Kyrgyz Republic. The project was called “Climate Resilience and Disaster Risk Reduction in Water Resources Management”.

13. The project interventions are both structural (including civil works and equipment) and non- structural (including capacity building, planning, and training). It comprises three outputs:

- i. Irrigation infrastructure modernized;
- ii. Agricultural and land management practices modernized;
- iii. Flood protection infrastructure modernized; and disaster risk and water resources data collection and analysis improved.

14. The project outcome is expected to be climate change and disaster resilience of each type that may be occurring because of lack of hydro post locations and early warning system.

15. The present hydro posts and early warning systems are parts of this project. Other subprojects will be identified later on during the project implementation process (it is expected that in total the project will include a total of 3-4 sites, including PVIS, located on the lower Syr Darya basin and Chuy basin).

5.2. Chui Oblast hydro posts

16. The planned project activities will not have LAR impacts. Because all construction works will be carried out strictly within the land plots of existing HP. Hydro posts (7) of Naryn and Chui regions selected within the framework of the project have State Acts for the right to use land plots, which are duly registered with the local Chui/Naryn bodies of the State Agency for Land Resources under the Government of the Kyrgyz Republic. Land plots were allocated to Kyrgyzhydromet at different times for the location of hydrological and meteorological stations.

17. Square measures of hydro posts are presented in Table 1 below.

Table 1: Square measures of land plots

No	Name of Hydro post	Square measure of land plot (m2)
1	Karagailuu	1000
2	Cholok-V	1500
3	Kara kujur	2174
4	Suek-Ichk Sai	1000
5	Ala-Archa	7500
6	Karakol-Irı Suu	1200
7	Tuyuk Isyk Ata	1000

5.2.1. Karagailuu hydro post

18. The projected facility is located in the Kemin district, Chui region of the Kyrgyz Republic.

19. The Karagailuu-Bulak station on the Chon-Kemin River operated from 1950 to 1996.

20. The project was developed based on the assignment of contract No. MOES-C-CQS-1, ADB Credit 3746-KGS/Grant 0632-KGS " Increasing the Resilience of Water Resources to Climate Change and Natural Disasters", and the subcontractor LLC "NUR SZHB" (Suu zhashoo bulagy) conducted a survey in August 2021 on the site of the hydrological post on the Chon-Kemin River. The technical task provides for the development of project cost documentation for the working project "Development of project cost documentation for the construction of a hydrological post on the Chon-Kemin River, at the mouth of the Karagaylyu-Bulak River, and a service-residential building near the meteorological site above the village of Kaindy in the Kemin district of the Chui region

21. The main goal of the project is the organization of hydrological observations based on the use of modern hydrometric equipment and instruments that are installed at the meteorological station and at the hydrological post.

22. Using the results of engineering surveys, when developing design estimates, among other parameters of the gauging cable car, it is necessary to determine: the span of the gauging cable car, the height position of the bottom of the gauging cable car, the height of the supports. Location of the meteorological site, residential building and outbuildings.

23. The source materials for determining the specified parameters of the gauging cable car are the topographic plan of the site selected for construction and a longitudinal profile along the axis with engineering-geological data, in particular, the position of the groundwater level, as well as the minimum and maximum river levels.

24. A view of the project area of Karagailuu bulak hydro post station is presented in Photo 1 below

Photo 1: A view from project area for Karagailuu-Bulak



5.2.1.1 Works to be done

25. The work on the object is recommended to begin with preparatory work on the construction of the production base of the construction site, preparation of the necessary earthmoving and construction mechanisms, removal and creation of a geodetic foundation for structures. Description of the works;

- The main hydrological post with the installation on the left bank of a gauge well with service ladder made of monolithic reinforced concrete;
- gauging cable car for measuring water flow with a turntable;
- sloping post (with upper and lower wells with a service ladder);
- fastening the slopes of dams with broken stone;
- construction of residential building;
- utility buildings;
- fencing of the territory and meteorological station.

5.2.1.2 Bill of quantity

26. The bill of quantity that is foreseen for Karagailuu-bulak hydro post is as follows;

Table 2: BoQ of Karagailuu-bulak hydro post

No	Name of work	Quantity
1.	Excavation	453,6 m ³

2.	Back filling	224,1 m ³
3.	Layout	411,3 m ²
4.	Monolithic concrete and reinforced concrete	34,6 m ³
5.	Metal structures	1,33 ton
6.	Apron fastening	260 m ³
7.	Rubble concrete	38,9 m ³
8.	Fastening with broken stone	380 m ³

5.2.1.3 Construction materials

27. To provide the facility with building materials, the project provides for the use of gravel and pebble material from the channel of the Chu River, located 1-2 km downstream of the gauging cable car. Useful material is represented by pebble soil with sandy aggregate 25%, with the inclusion of boulders up to 10%, boulder size up to 300 mm. Manual excavation group - 3 (6B). Soil reserves are sufficient for the construction of a new hydrometric cradle in the surveyed

5.2.1.4 Equipment needed

28. In order to fulfill the scope of work envisaged by the project, the following mechanisms are envisaged:

- Single -bucket excavator with bucket capacity 0,65 m³ – 1 piece
- Bulldozer with power up to 130 kW - 1 piece;
- Automobile crane with a lifting capacity of up to 10 tons - 1 piece;
- Car water carrier with a capacity of 1-2 m³ - 1 piece;
- Dump trucks with a carrying capacity of up to 10 tons - 1 piece;
- Concrete mixer 0.5 m³ - 1 piece;
- Cars onboard with a carrying capacity of up to 10 tons - 1 piece

5.2.2. Cholok-V hydro post

29. The projected facility is located in the Kemin district, Chui region of the Kyrgyz Republic.

30. The project was developed based on the contract No. MOES-C-CQS-1, ADB Credit 3746-KGS/Grant 0632- KGS "Increasing Resilience of Water Resources to Climate Change and Natural Disasters", and the contractor LLC "NUR SZHB" (Suu Zhashoo Bulagy) in August 2021 made a survey at the site of hydrological post on the river Chu. The terms of reference provided for the development of design and estimate documentation of the working project "Development of design and estimate documentation for the construction of a hydrological post on the Chu River in Cholok village of Kemin district of Chui region":

31. The main goal of the project is the organization of hydrological observations based on the use of modern hydrometric equipment and instruments that are installed at the meteorological station and at the hydrological post.

32. Using the results of engineering surveys in the development of design estimates, among other parameters, a gauging cable car it is necessary to define: span of the gauging cable car height position of the bottom of the cradle height of supports. Location of the meteorological site, residential building and outbuildings.

33. The starting materials for determining the specified parameters of the gauging cable car are the topographic plan of the site selected for construction and the longitudinal profile along the axis with engineering and geological data applied to it, in particular the position of the groundwater level, as well as the minimum and maximum levels in the river.

34. A view of the project area of Cholok-V hydro post station is presented in Photo 2 below.

Photo 2: A view from project area for Cholok-V



5.2.2.1 Works to be done

35. The work on the object is recommended to begin with preparatory work on the construction of the production base of the construction site, preparation of the necessary earthmoving and construction mechanisms, removal and creation of a geodetic foundation for structures. Description of the works;

- The main hydrological post with the installation on the left bank of a gauge well with service ladder made of monolithic reinforced concrete;
- gauging cable car for measuring water flow with a turntable;
- sloping post (with upper and lower wells with a service ladder);
- fixing slopes with broken stone;
- construction of residential building;
- utility buildings;
- fencing of the territory and meteorological station;

5.2.2.2 Bill of quantity

36. The bill of quantity that is foreseen for Cholok-V hydro post is as follows;

Table 3: BoQ of Cholok-V hydro post

No	Name of work	Quantity
1.	Excavation	453,6 m ³
2.	Back filling	224,1 m ³
3.	Layout	411,3 m ²

4.	Monolithic concrete and reinforced concrete	34,6 m ³
5.	Metal structures	1,33 ton
6.	Apron fastening	260 m ³
7.	Rubble concrete	38,9 m ³
8.	Fastening with broken stone	380 m ³

5.2.2.3 Construction materials

37. To provide the facility with building materials, the project provides for the use of gravel and pebble material from the channel of the Chu River, located 1-2 km downstream of the gauging cable car. Useful material is represented by pebble soil with sandy aggregate 25%, with the inclusion of boulders up to 10%, boulder size up to 300 mm. Manual excavation group - 3 (6B). Soil reserves are sufficient for the construction of a new hydrometric cradle in the surveyed area.

38. Water for technical needs should be taken from the Chu River.

5.2.2.4 Equipment needed

39. In order to fulfill the scope of work envisaged by the project, the following mechanisms are envisaged:

- Single bucket excavator with bucket capacity 0,65 m³ – 1 piece;
- Bulldozer with power up to 130 kW - 1 piece;
- Automobile crane with a lifting capacity of up to 10 tons - 1 piece;
- Car water carrier with a capacity of 1-2 m³ - 1 piece;
- Dump trucks with a carrying capacity of up to 10 tons -1 piece;
- Concrete mixer 0.5 m³ - 1 piece;
- Cars onboard with a carrying capacity of up to 10 tons - 1 piece

5.2.3. Kara kujur hydro post

40. The projected facility is located in the Kochkor district of the Naryn region of the Kyrgyz Republic.

41. The project was developed based on the task of the contract No. MOES-C-CQS-1, ADB Credit 3746-KGS/Grant 0632-KGS "Increasing the resilience of water resources to climate change and natural disasters", and in August 2021, the survey was conducted at the hydrological station site on the Kara-Kuzhur River by the contractor LLC "NUR SZHB" (suu zhashoo bulagy).. The technical specification provides for the development of design and estimate documentation for the working project "Development of design and estimate documentation for the construction of a hydrometric station on the Kara-Kuzhur River in Sary-Bulak village and a service-residential building near the meteorological site in Sary-Bulak village, Kochkor district, Naryn region.

42. The main goal of the project is the organization of hydrological observations based on the use of modern hydrometric equipment and instruments that are installed at the meteorological station and at the hydrological post.

43. Using the results of engineering surveys in the development of design estimates, among other parameters, a gauging cable car it is necessary to define: span of the gauging cable car height position of the bottom of the cradle height of supports.

44. The source materials for determining the specified parameters of the gauging cable car are the topographic plan of the site selected for construction and a longitudinal profile along the axis with engineering-geological data, in particular, the position of the groundwater level, as well as the minimum and maximum river levels.

45. A view of the project area of Cholok-V hydro post station is presented in Photo 3 below

Photo 3: A view from project area for Kara-kujur



5.2.3.1 Works to be done

46. The work on the object is recommended to begin with preparatory work on the construction of the production base of the construction site, preparation of the necessary earthmoving and construction mechanisms, removal and creation of a geodetic foundation for structures. Description of the works;

- The main hydrological post with the installation on the left bank of a gauge well with service ladder made of monolithic reinforced concrete;
- gauging cable car for measuring water flow with a turntable;
- gauge house;
- sloping post (with upper and lower wells with a service ladder);
- reinforcement of dam slopes with broken stone;
- construction of a residential house;
- construction of utility buildings;
- Territory fencing and meteorological station.

5.2.3.2 Bill of quantity

47. The bill of quantity that is foreseen for Kara-kujur hydro post is as follows;;

Table 4: BoQ of Kara-kujur hydro post

No	Name of work	Quantity
1.	Excavation	453,6 m ³
2.	Back filling	224,1 m ³
3.	Layout	411,3 m ²
4.	Monolithic concrete and reinforced concrete	34,6 m ³
5.	Metal structures	1,33 ton
6.	Apron fastening	260 m ³
7.	Rubble concrete	38,9 m ³
8.	Fastening with broken stone	380 m ³

5.2.3.3 Construction materials

48. To provide the construction site with building materials, the project provides for the use of gravel-pebble material from the bed of the Kara-Kuzhur River, located downstream from the gauge cable car by 1-2 km. The useful material is represented by gravel soil with a sandy filler of 25%, including boulders up to 10%, with boulder sizes up to 300 mm. The soil's manual excavation group is 3(6B). The soil reserves are sufficient for the construction of a new hydrometric cradle on the surveyed site..

49. Water for technical needs should be taken from the Kara-Kuzhur River

5.2.3.4 Equipment needed

50. In order to fulfill the scope of work envisaged by the project, the following mechanisms are envisaged:

- Single -bucket excavator with bucket capacity 0,65 m³ – 1 piece;
- Bulldozer with power up to 130 kW - 1 piece;
- Automobile crane with a lifting capacity of up to 10 tons - 1 piece;
- Car water carrier with a capacity of 1-2 m³ - 1 piece;
- Dump trucks with a carrying capacity of up to 10 tons - 1 piece;
- Concrete mixer 0.5 m³ - 1 piece;
- Cars onboard with a carrying capacity of up to 10 tons - 1 piece

5.2.4. Suek-lchk Sai hydro post

51. The projected facility is located in Kochkor district, Naryn region of the Kyrgyz Republic.

52. The project was developed based on the assignment of contract No. MOES-C-CQS-1, ADB Credit 3746-KGS/Grant 0632-KGS "Improving the Resilience of Water Resources to Climate Change and Natural Disasters," and the contractor LLC "NUR SZHB" (construction) conducted a survey of the hydrological station area across the Sook River in August 2021. The technical assignment provides for the development of project and estimate documentation for the working project "Development of project and estimate documentation for the construction of a hydrological

station on the Sook River - the mouth of the Ichke-Sai stream and a service-residential building near the meteorological site Uch-Emchek, Mantiysh village, Kochkor district, Naryn region

53. The main goal of the project is the organization of hydrological observations based on the use of modern hydrometric equipment and instruments that are installed at the meteorological station and at the hydrological post.

54. Using the results of engineering surveys in the development of design estimates, among other parameters, a gauging cable car it is necessary to define: span of the gauging cable car height position of the bottom of the cradle height of supports.

55. The source materials for determining the specified parameters of the gauging cable car are the topographic plan of the site selected for construction and a longitudinal profile along the axis with engineering-geological data, in particular, the position of the groundwater level, as well as the minimum and maximum river levels.

56. A view of the project area of Suek-Ichk Sai hydro post station is presented in Photo 4 below

Photo 4: A view from project area for Suek-Ichk Sai



5.2.4.1 Works to be done

57. The work on the object is recommended to begin with preparatory work on the construction of the production base of the construction site, preparation of the necessary earthmoving and construction mechanisms, removal and creation of a geodetic foundation for structures. Description of the works;

- The main hydrological post with the installation on the left bank of a gauge well with service ladder made of monolithic reinforced concrete;
- gauging cable car for measuring water flow with a turntable;
- gauge house;
- sloping post (with upper and lower wells with a service ladder);
- fastening the slope with broken stone
- construction of residential building ;
- utility buildings
- fencing of the territory and meteorological station.

5.2.4.2 Bill of quantity

58. The bill of quantity that is foreseen for Suek-Ichk hydro post is as follows

Table 5: BoQ of Suek-Ichk Sai hydro post

No	Name of work	Quantity
1.	Excavation	475 m ³
2.	Back filling	276 m ³
3.	Layout	809,6 m ²
4.	Monolithic concrete and reinforced concrete	25,4 m ³
5.	Metal structures	1,33 ton
6.	Apron fastening	83 m ³
7.	Rubble concrete	55,7 m ³

5.2.4.3 Construction materials

59. To provide the construction site with building materials, the project envisages the use of gravel-pebble material from the bed of the Sook River - the mouth of the Ichke-Sai stream, located 1-2 km downstream from the cableway crossing. The useful material is represented by a pebble soil with a sandy filler of 25%, including boulders up to 10% with a size of up to 300 mm. The manual excavation group of the soil is 3 (6B). The reserves of the soil are sufficient for the construction of a new hydrometric station on the surveyed site.

60. Water for technical needs is to be taken from the Sook River - the mouth of the Ichke-Sai stream.

5.2.4.4 Equipment needed

61. In order to fulfill the scope of work envisaged by the project, the following mechanisms are envisaged:

- Single bucket excavator with bucket capacity 0,65 m³ – 1 piece;
- Bulldozer with power up to 130 kW - 1 piece;
- Automobile crane with a lifting capacity of up to 10 tons - 1 piece;
- Car water carrier with a capacity of 1-2 m³ - 1 piece;
- Dump trucks with a carrying capacity of up to 10 tons - 1 piece;
- Concrete mixer 0.5 m³ - 1 piece;
- Cars onboard with a carrying capacity of up to 10 tons - 1 piece

5.2.5. Ala-Archa hydro post

62. The projected facility is located in the Alamudun district, Chui region of the Kyrgyz Republic.

63. The project was developed based on the task of contract No. MOES-C-CQS-1, ADB Loan 3746-KGS / Grant 0632-KGS "Increasing the Resilience of Water Resources to Climate Change and Natural Disasters", and the subcontractor LLC "NUR SZHB" (construction works) conducted a survey in August 2021, survey was carried out at the site of the hydrological post on the Padysh-Ata river-the mouth of the Tostu river. The technical task includes the

development of project cost estimates for the working project «Development of design and estimate documentation for the construction of hydrological post on the Ala-Archa River - the mouth of the Kashka-Suu River and service-residential building near the Baitik meteorological site of the Alamudun District of the Chui Region

64. The main goal of the project is the organization of hydrological observations based on the use of modern hydrometric equipment and instruments that are installed at the meteorological station and at the hydrological post.

65. Using the results of engineering surveys in the development of design estimates, among other parameters, a gauging cable car it is necessary to define: span of the gauging cable car height position of the bottom of the cradle height of supports.

66. The source materials for determining the specified parameters of the gauging cable car are the topographic plan of the site selected for construction and a longitudinal profile along the axis with engineering-geological data, in particular, the position of the groundwater level, as well as the minimum and maximum river levels.

67. A view of the project area of Ala-Archa hydro post station is presented in Photo 5 below

Photo 5: A view from project area for Ala-Archa



5.2.5.1 Works to be done

68. The work on the object is recommended to begin with preparatory work on the construction of the production base of the construction site, preparation of the necessary earthmoving and construction mechanisms, removal and creation of a geodetic foundation for structures. Description of the works;

- The main hydrological post with the installation on the left bank of a gauge well with service ladder made of monolithic reinforced concrete;
- hydrometric bridge for measuring water flow with a turntable;
- gauge house;
- sloping post (with upper and lower wells with a service ladder);
- construction of residential building;
- utility buildings;
- fencing of the territory and meteorological station.

5.2.5.2 Bill of Quantity

69. The bill of quantity that is foreseen for Ala-Archa hydro post is as follows;

Table 6: BoQ of Ala-Archa hydro post

No	Name of work	Quantity
1.	Excavation	446,2 m ³
2.	Back filling	232 m ³
3.	Layout	1.195 m ²
4.	Monolithic concrete and reinforced concrete	321 m ³
5.	Reinforcement	22,8 ton
6.	Apron fastening	116,5 m ³
7.	Dismantling of monolithic reinforced concrete	162 m ³

5.2.5.3 Construction materials

70. To provide the facility with building materials, the project provides for the use of gravel and pebble material from the Ala-Archa riverbed, located 1-2 km downstream of the hydrometric bridge. Useful material is represented by pebble soil with sandy aggregate 25%, with the inclusion of boulders up to 10%, boulder size up to 300 mm. Manual excavation group - 3 (6B). Soil reserves are sufficient for the construction of a new hydrometric cradle in the surveyed area.

71. Water for technical needs should be taken from the Ala-Archa River - the mouth of the Kashka-Suu River.

5.2.5.4 Equipment needed

72. In order to fulfill the scope of work envisaged by the project, the following mechanisms are envisaged:

- Single bucket excavator with bucket capacity 0,65 m³ – 1 piece;
- Bulldozer with power up to 130 kW - 1 piece;
- Automobile crane with a lifting capacity of up to 10 tons - 1 piece;
- Car water carrier with a capacity of 1-2 m³ - 1 piece;
- Dump trucks with a carrying capacity of up to 10 tons - 1 piece;
- Concrete mixer 0.5 m³ - 1 piece;
- Cars onboard with a carrying capacity of up to 10 tons - 1 piece

5.2.6. Karakol-Iri Suu hydro post

73. The projected facility is located in Kochkor district, Naryn region of the Kyrgyz Republic.

74. The project was developed based on the task of contract No. MOES-C-CQS-1, ADB Credit 3746-KGS/Grant 0632-KGS "Increasing the Resilience of Water Resources to Climate Change and Natural Disasters", and the subcontractor LLC "NUR SZHB" (construction works) conducted a survey in August 2021 at the site of the hydrological station across the Karakol River mouth of the Iyri-Suu River. The technical task includes the development of project cost estimates for the working project "Development of project cost estimates for the construction of a hydrological station across the Karakol River mouth of the Iyri-Suu River and a service-residential building near the meteorological site in the Iyri-Suu area, Mantishe village, Kochkor district, Naryn region

75. The main goal of the project is the organization of hydrological observations based on the use of modern hydrometric equipment and instruments that are installed at the meteorological station and at the hydrological post.

76. Using the results of engineering surveys in the development of design estimates, among other parameters, a gauging cable car it is necessary to define: span of the gauging cable car height position of the bottom of the cradle height of supports.

77. The source materials for determining the specified parameters of the gauging cable car are the topographic plan of the site selected for construction and a longitudinal profile along the axis with engineering-geological data, in particular, the position of the groundwater level, as well as the minimum and maximum river levels.

78. A view of the project area of Karakol-Iri Suu hydro post station is presented in **Error! Reference source not found.** below

Photo 6: A view from project area for Karakol-Iri suu



5.2.6.1 Works to be done

79. The work on the object is recommended to begin with preparatory work on the construction of the production base of the construction site, preparation of the necessary earthmoving and construction mechanisms, removal and creation of a geodetic foundation for structures. Description of the works;

- The main hydrological post with the installation on the left bank of a gauge well with service ladder made of monolithic reinforced concrete;
- gauging cable car for measuring water flow with a turntable;
- gauge house;
- sloping post (with upper and lower wells with a service ladder);
- fastening the slope with a broken stone
- construction of residential building ;
- utility buildings
- fencing of the territory and meteorological station

5.2.6.2 Bill of Quantity

80. The bill of quantity that is foreseen for Karakol-Iri Suu hydro post is as follows

Table 7: BoQ of Karakol-Iri Suu hydro post

No	Name of work	Quantity
1.	Excavation	475 m ³
2.	Back filling	276 m ³
3.	Layout	809,6 m ²
4.	Monolithic concrete and reinforced concrete	25,4 m ³
5.	Metal structure	1,33 ton
6.	Apron fastening	83 m ³
7.	Rubble concrete	55,7 m ³

5.2.6.3 Construction materials

81. To provide the facility with building materials, the project provides for the use of gravel and pebble material from the Karakol riverbed, the mouth of the Iry-Suu river, located 1-2 km downstream of the gauging cable car. Useful material is represented by pebble soil with sandy aggregate 25%, with the inclusion of boulders up to 10%, boulder size up to 300 mm. Manual excavation group - 3 (6B). Soil reserves are sufficient for the construction of a new hydrometric cradle in the surveyed area.

82. Water for technical needs should be taken from the Karakol River, the mouth of the Iry-Suu River.

5.2.6.4 Equipment needed

83. In order to fulfill the scope of work envisaged by the project, the following mechanisms are envisaged:

- Single bucket excavator with bucket capacity 0,65 m³ – 1 piece;
- Bulldozer with power up to 130 kW - 1 piece;
- Automobile crane with a lifting capacity of up to 10 tons - 1 piece;
- Car water carrier with a capacity of 1-2 m³ - 1 piece;
- Dump trucks with a carrying capacity of up to 10 tons - 1 piece;
- Concrete mixer 0.5 m³ - 1 piece;
- Cars onboard with a carrying capacity of up to 10 tons - 1 piece

5.2.7. Tuyuk Isyk Ata hydro post

84. The facility under design is located in Issyk-Ata district, Chui region of the Kyrgyz Republic, 300 m south of the village of Syn-Tash, Chui region, 60 km southeast of Bishkek.

85. The station on the Issyk-Ata river operated from 1926 to 1995.

86. A hydrological post on the Issyk-Ata River was completely destroyed by floods. In this regard, it was necessary to choose a new location for the gauging station downstream by 0.38 km

87. The project was developed based on the task of the contract No. MOES-C-CQS-1, ADB Loan 3746-KGS / Grant 0632-KGS "Increasing the Resilience of Water Resources to Climate

Change and Natural Disasters", and the subcontractor LLC "NUR SZHB" (Suu zhashoo bulagy) in August 2021, a survey was carried out at the site of the hydrological post on the Issyk-Ata river. The terms of reference provide for the development of design and estimate documentation for the working project "Development of design and estimate documentation for the construction of a hydrological post of the Yssyk-Ata River - the mouth of the Tuyuk River and service-residential building near the meteorological site in the village of Yuryevka, Issyk-Ata District, Chui Region

88. The main goal of the project is the organization of hydrological observations based on the use of modern hydrometric equipment and instruments that are installed at the meteorological station and at the hydrological post.

89. Using the results of engineering surveys in the development of design estimates, among other parameters, a gauging cable car it is necessary to define: span of the gauging cable car height position of the bottom of the cradle height of supports. Location of the meteorological site, residential building and outbuildings.

90. The starting materials for determining the specified parameters of the gauging cable car are the topographic plan of the site selected for construction and the longitudinal profile along the axis with engineering and geological data applied to it, in particular the position of the groundwater level, as well as the minimum and maximum levels in the river.

91. A view of the project area of Tuyuk-Isyk Ata hydro post station is presented in Photo 7 below

Photo 7: A view from project area for Tuyuk-Isyk Ata



5.2.7.1 Works to be done

92. The work on the object is recommended to begin with preparatory work on the construction of the production base of the construction site, preparation of the necessary earthmoving and construction mechanisms, removal and creation of a geodetic foundation for structures. Description of the works;

- The main hydrological post with the device on the right bank of gauging well with a service ladder made of monolithic reinforced concrete;
- gauging cable car for measuring water flow with a turntable;
- gauge house;
- sloping post (with upper and lower well with a service ladder);
- Reinforcement of slopes with irregular/crushed stone.;
- construction of residential building 60 sq.m.;
- utility buildings 24,2 sq.m.;

- fencing of the territory and meteorological station.
- riverbed cleaning and site planning

5.2.7.2 Bill of Quantity

93. The bill of quantity that is foreseen for Tuyuk-Isyk Ata hydro post is as follows

Table 8: BoQ of Tuyuk-Isyk Ata hydro post

No	Name of work	Quantity
1.	Excavation	453,6 m ³
2.	Back filling	224,1 m ³
3.	Layout	411,3 m ²
4.	Monolithic concrete and reinforced concrete	34,6 m ³
5.	Metal structure	1,33 ton
6.	Apron fastening	260 m ³
7.	Rubble concrete	38,9 m ³
8.	Fastening with broken stone	380 m ³

5.2.7.3 Construction Materials

94. To provide the facility with building materials, the project provides for the use of gravel and pebble material from the reservoir of the Issyk-Ata River, located 1-2 km downstream of the gauging cable car. Useful material is represented by pebble soil with sandy aggregate 25%, with the inclusion of boulders up to 10%, boulder size up to 300 mm. Manual excavation group - 3 (6B). Soil reserves are sufficient for the construction of a new hydrometric cradle in the surveyed area

95. Water for technical needs is taken from the Issyk-Ata River.

5.2.7.4 Equipment needed

96. In order to fulfill the scope of work envisaged by the project, the following mechanisms are envisaged:

- Single bucket excavator with bucket capacity 0,65 m³ – 1 piece;
- Bulldozer with power up to 130 kW - 1 piece;
- Automobile crane with a lifting capacity of up to 10 tons - 1 piece;
- Car water carrier with a capacity of 1-2 m³ - 1 piece;
- Dump trucks with a carrying capacity of up to 10 tons - 1 piece;
- Concrete mixer 0.5 m³ - 1 piece;
- Cars onboard with a carrying capacity of up to 10 tons – 1 piece

5.3. Conclusion

97. PIU and PIC social safeguards specialists Mr. Kalyibek Zhunusbaev and Mrs. N. Kydyralieva visited the hydro posts in Chui Zone in 2020, and filled LAR check lists presented in **appendix 11.1**.

98. According to decision made following to aforementioned site visit, it has been concluded that this project has not required any land acquisition, requisition of resettlement activity or any access road need.

99. Following the field visit, it is found out that none of hydro posts is in need of a resettlement action or land acquisition.

100. Service roads exist that serve to access to project area for transportation of equipment and contractors mobilization

101. There is no complaint about the project. Local people looking forward to seeing this project starting up

6. CONSULTATION, PARTICIPATION AND DISCLOSURE OF INFORMATION

102. Separate public consultation meeting was not held for Chui hydro post and off-farm and on-farm canals. In one meeting, all project related information is conveyed to project proponents and possibly affected peoples

103. Public consultation has been realized on 10.06.2021 at 10:00 am in the meeting room of the Chui Regional State Administration of Chui Rayon of Chui Oblast. (Please see appendix 11.2 for attendance list and minute of meeting)The announcement was posted in the “Slovo Kyrgyzstan” local newspaper dated 11.05.2021 and on the wall of announcements of district administrations and local self-government, with the following content (Figure 2)

Figure 2: Announcement of public hearing

DEAR RESIDENTS of
Chui Rayon, Chui Oblast
On June 10, 2021, at 10:00, in the meeting room of the Chui Regional State Administration
PUBLIC CONSULTATION
will be organized on Environmental Impact Assessment and Social Issues
for the Osmon Canal subproject implemented within the framework of the project to increase
the resilience "Water Resilience to Climate Change and Natural Disasters Project"

10 СЛОВО
КЫРГЫЗСТАНА 11 июн 2021 жыл

УРМАТТУУ ЖАРАНДАР!
2021-жылдын 10-июнунда саат 10.00до
Чүй райондук мамлекеттик администрациясынын
имаратындагы жыйындар залында
Дареги: Чүй айылы, Ибраимов көчөсү, №33
"Суу ресурстарынын климаттын өзгөрүшүнө жана
табигый кырсыктарга туруктуулугун жогорулатуу"
долбоорунун алкагында "Осмон" каналындагы чакан
долбоорчосунун
айлана-чөйрөгө тийгизген таасирин баалоо жана
социалдык маселелер туралуу
КООМДУК УГУУ өткөрүлөт

УВАЖАЕМЫЕ ЖИТЕЛИ
Чуйского района Чуйской области!
10 июня 2021 года в 10.00 в зале заседаний Чуйской
районной госадминистрации состоится
ОБЩЕСТВЕННЫЕ СЛУШАНИЯ
по оценке воздействия на окружающую среду и
социальным вопросам по подпроекту для канала
"Осмон", реализуемому в рамках проекта "Повышение
устойчивости водных ресурсов к изменению климата и
стихийным бедствиям".

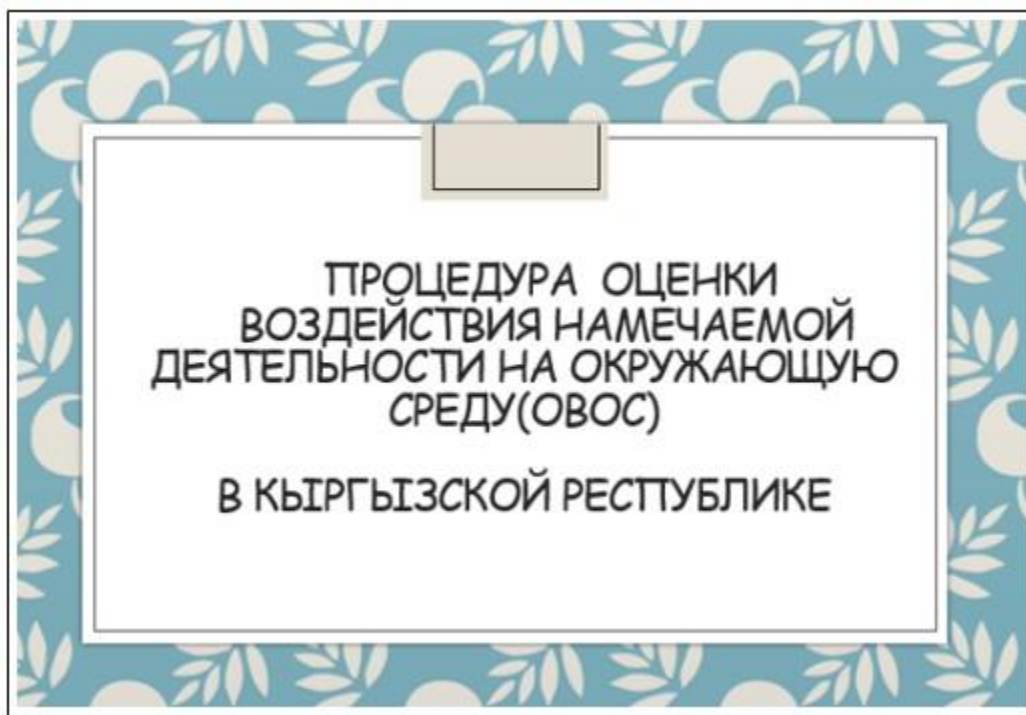
104. Under the IEE consultation procedure, the following proposals are considered during the consultation; (i) coordinate reconstruction work with local authorities; (ii) rehabilitate canals for the long term; (iii) assistance to the local population and LGB in the issues of correcting the canal routing; (iv) recruiting local skilled and unskilled labor for rehabilitation work and considering further opportunities for community participation in permanent road maintenance; (v) the impact of the Project on human settlements and agricultural land; (vi) general consensus - the Project will not have potentially significant negative impacts that could not be avoided or significantly

mitigated through good design and engineering practice; (vii) If questions or complaints arise as a result of the design, then there will be separate consultations with households and stakeholders regarding this process.

105. Kalybek Zhunusbaev from PIU took part in the public participation meeting. PIC was represented by the following experts: International environmental safeguard, national environmental safeguard, national social safeguard and translator. 55 local people, including 2 women has been participated.

106. Two presentations have been made on environmental and social issues by Zhanybek Orozaly uulu, Narina Kydyralieva, respectively. Presentations have been prepared in Russian and Kyrgyz explaining the Project and the OVOS procedure, environmental and social impacts and mitigation measures in general. At Figure 3 presentation of Zhanybek Orozaly uulu is given

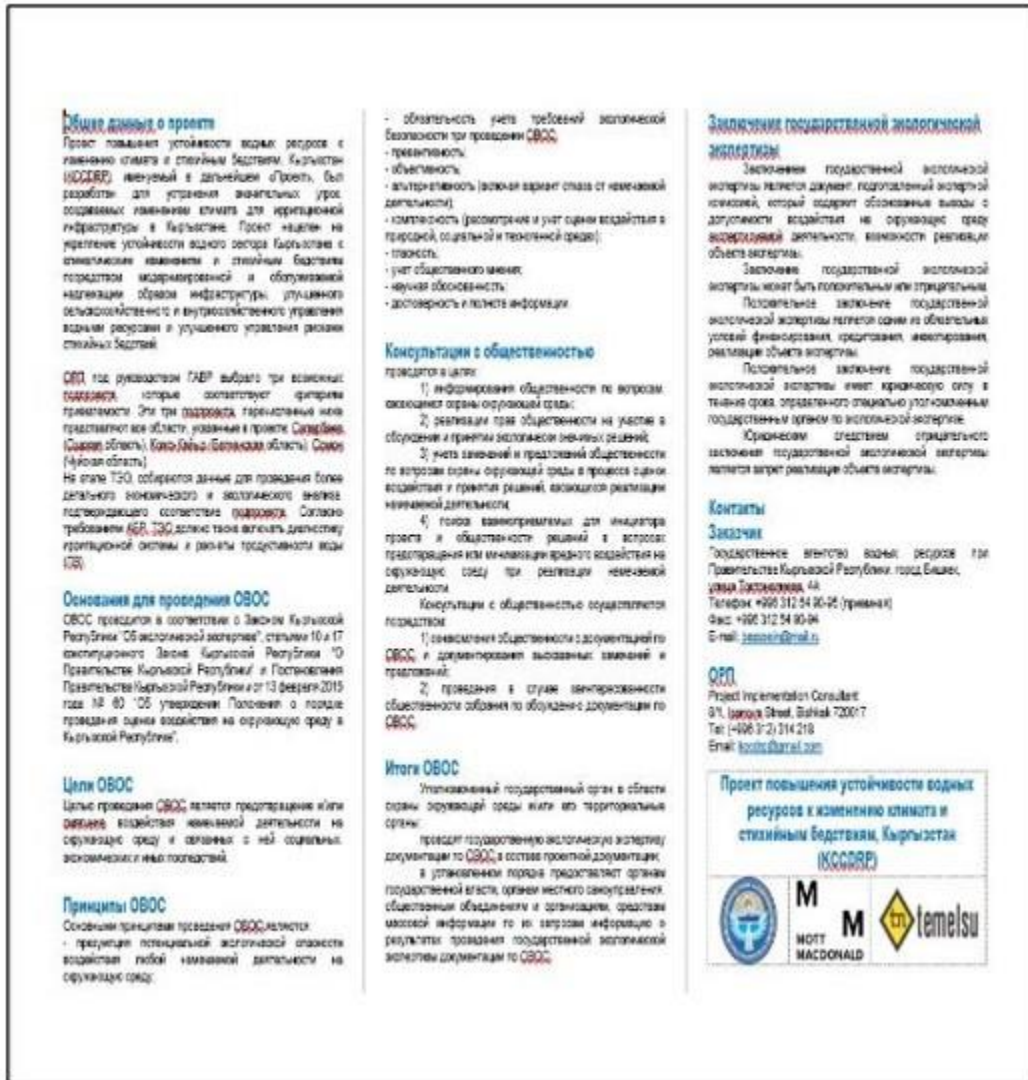
Figure 3: Screenshot of presentation on the OVOS procedure



107. A short brochure in Russian and Kyrgyz on the Project and the OVOS procedure were prepared for the population (Figure 4) The special brochure in 2 languages contained:

- Information about the initiator of the Project (name, legal, postal and e-mail addresses, telephone and fax numbers);
- The name, justification, and description of the planned activity.
- Information about the location of the planned activity.
- Information on the timing of the implementation of the planned activity.
- Information on the timing of public discussions and submission of comments on the OVOS documentation.
- Information on where you can get acquainted with the OVOS documentation and where to send comments and suggestions on it (name, postal address, website, last name, first name, patronymic and position of the contact person, telephone and fax numbers, email address).

Figure 4: Screenshot of the brochure on the Project and the OVOS procedure



108. On June 10, 2021, based on the results of public discussions, the relevant local administrations and local self-government bodies, together with the project initiator, committed to place the OVOS documentation in the places specified in the brochure at the request of the OVOS Regulation, and provide public access to get acquainted with the documentation on OVOS, the possibility to document issues, comments, and suggestions on the submitted documentation during the entire period of the project.

109. Since during the meeting arranged to discuss the OVOS documentation, answers were given to all the questions raised by the people present, sending answers to the authors of the questions to the postal or e-mail address indicated by them within 30 calendar days from the date of the meeting was not needed. Based on the results of public hearings, a protocol was drawn up, which was signed by all participants, agreeing on a common opinion on the implementation of the Project and the assistance of local communities.

Photo 8: Public hearings in the meeting room of the Chui Regional State Administration



Photo 9: Presentation of Social Expert in the meeting room of the Chui Regional State Administration



6.1. Summary of the Comments and Concerns Received from Affected People and other Stakeholders

110. All affected people and stakeholders are expecting significant improvements with the subproject implementation. During the field mission, the following comments and concerns were collected:

- Terms of the project, such as starting and ending dates, scope.
- Approximate date of the commencement of the rehabilitation works.
- The service life duration of the canals after commissioning of the construction objects.
- The reason to wait so long for construction works.
- Despondency about the period of the rehabilitation works.
- Trees, whether they could be cut down, before the commencement of construction works.
- Since in the past WUAs undermined the confidence of water users, now the population is also suspicious of all actions. Where to apply and contacts for opposite ideas, suggestions

7. GRIEVANCE REDRESS MECHANISM (GRM)

111. The Grievance Redress Mechanism (GRM) has been established in accordance with the requirements of Environmental Assessment & Review Framework (EARF), Environmental Impact Assessment/ Environmental Management Plan (EIA/EMP), Land Acquisition and Resettlement Framework (LARF) to streamline the process of acceptance, consideration and resolution of

concerns and complaints from affected persons (APs) that may arise from the implementation of project activities

112. The Grievance Redress Mechanism (GRM) is a process and forum through which the affected people need a trusted way to voice and resolve concerns about land acquisition and resettlement (LAR) and other environmental and social aspects and the project also finds an effective way to address affected people's (AP) concerns.

113. Affected People (AP) and local community have the right to file complaints and/or queries on any aspect of the project, including LAR, environmental and other safeguard issues. Under the GRM, people may appeal any decision, practice or activity related to the project. All possible avenues will be made available to the affected persons and others to voice their grievances. The Project Implementation Unit (PIU) will ensure that grievances and complaints on any aspect of the project are addressed in a timely and effective manner

114. The mechanism will consist of grievance resolution of two levels. Initial level is the local one in village level. Second level is a grievance redress group (GRG) at Subproject level. The role and responsibility of GRG is to accept claims and complaints, assess their validity, determine the scale of possible consequences and resolve the issue in a timely manner, including claims for compensation, as well as, ensure flexibility and effectiveness in decision-making and handling of complaints.

115. The GRGs will function for the duration of both LARP and the entire project implementation.

116. The GRG covers issues related to social, environmental and other safeguards in accordance with ADB Safeguards Policy and the legislation of the Kyrgyz Republic.

7.1. Objectives of GRM

117. Objectives of the GRM are as follows:

- To reach mutually agreed solutions satisfactory to both the project and the APs, and to resolve any grievances locally, in consultation with the aggrieved party;
- To facilitate the smooth implementation of the Land Acquisition and Resettlement Plan (LARP), particularly to cut down on lengthy litigation processes and prevent delays in project implementation;
- To facilitate the development process at the local level, while maintaining transparency as well as to establish accountability to the affected people;
- To handle, record, screen, process, track and reply the complains about the social, environmental and other safeguard related grievances;
- To set feedback;
- Encourage vulnerable individuals and/or groups in expressing their views.

7.2. Grievance Redress Groups

118. Local GRGs (LGRG) were created on the basis of hydro posts. The compositions of the Grievance Redress Groups were approved by the AA in 2023 which are more than one GRGs (Please See **appendix 11.3**).

119. LGRGs were composed of different member numbers according to scale of hydro post. This composition may vary depending on the issue specifics. Any other authorities or experts may be involved in the LGRG activities. LGRG are established at the local level and include representatives of the AA (Local Self Governments), and the AiyI Kenesh (Rural/Village Parliament/Council) represented by an officer responsible on land issues at the level of the AA,

or in order to make it accessible to the headman of the respective villages; or an officer in social safeguards of PIC; Local parliament deputies, Representatives of the WUA / WUA Council.

120. Local Focal Points (LFP) will consider and prepare documents on the case in accordance with the proposed format. A formal meeting will be held with the GRG on the day appointed by the LFP in consultation with the AP. On the day of the LGRG meeting, APs must visit the office of the respective AA, meet with the LGRG, provide case documents and evidence (if any) to support their claim. The LFP will register the AP's application, accept the documents supporting the complaint, and organize a LGRG meeting to discuss the case. The decision made by the majority of the LGRG members will be final. This decision will be duly formalized by the LGRG and signed by the LGRG members. The record in the case will be updated, LFP will inform the complainant about the decision within 7 working days after the application date. If the complainant is not satisfied with the decision, LFP will assist in drafting a written complaint to the GRG at the subproject level - the Subproject Coordination Committee (SCC), including the attachment of the opinion and supporting documents prepared at the local level. Grievance data should be gender disaggregated

7.3. Local Focal Points (LFP)

121. Any complaint related to social, environmental and other safeguard issues will be received by Local Focal Point (LFP). Where the activities of the subproject have been implemented, LFPs to be nominated and appointed then this information will be shared with all local people prior to the commencement of construction works. LFP will be responsible for the complaints handling process. LFP is expected to be aware of context, facts and system. Please see **Table 9** for LFP list appointed

Table 9: LFP list

Aiyl Okmotu	Water User Association	Contact Information
Iskra	Fi-Lun	Full name: Kudaibergenov Kerimbay Position: head of the village of Iskra Telephone: +996 701454513
Saylyk		Full name: Ysykzhanov Bolot Position: Head of the village Saylyk Telephone: + 996 704167772
Chui	Karagul-Ata	Full name: Mederbek W. Samat Position: Leading Specialist of the Housing and Public Utilities Department Telephone: +996 702742322
Ak-Beshim	Ak-Beshim Cyy	Full name: Nazarmatov Karybek Position: head of the village of Ak-Beshim Telephone: +996 705233832

7.4. Sub-project Coordination Committees

122. The purpose of the Sub-project Coordination Committees (SCC) is to provide a platform for all stakeholders directly involved in the implementation of the subproject to monitor, review, discuss and decide on issues related to the implementation of the subprojects, the Subproject Coordination Committees (SCCs) are established for each subproject. The SCC shall be an advisory and consultative body to the Sub-projects, whose decisions shall have a recommendatory character. The minutes of meeting of the SSC of Chui hydro post sub-project is in **appendix 11.4**

123. The main functions of SCC include, but are not limited to the following;

- To coordinate the activities and stakeholders at subproject and system levels
- To support the implementation and monitoring of the subproject activities and reporting of progress.
- To consider conflicts and disputes between stakeholders involved in the implementation of the subproject.

7.5. Grievance Resolution Process

124. Affected Persons (APs) as well as other Project Affected Persons (PAPs) will have permanent access to the LFP and LGRG. Complaints will first be made at the village/community level of the complainant. The AP will report the complaint to the Local Focal Point (LFP). LFP will register the complaint and verify its eligibility. At this stage, the LFP will listen to AP and try to provide acceptable solutions. If the AP is not satisfied with the decisions, he/she will apply to the LGRG with a complaint in writing within 3 days.

125. The LFP will organize a Local Grievance Redress Group (LGRG) meeting. The LGRG will assess the situation and begin to seek a solution in consultation with the APs. At this stage, LGRG must try to resolve the complaint within 7 business days from the date the complaint was filed. For discussion at the local level, meetings will be held in AP's village. If a complex complaint requires expert opinion, additional time may be required. AP will be clearly informed about it.

126. If AP is not satisfied with the LGRG decision, then AP shall apply to the SCC. All supporting documents such as photographs, required certificates, legal and technical expert opinions, if necessary, should be prepared, reviewed and evaluated. After the grievance is resolved, the SCC will arrange a complaint closure meeting where AP will confirm the complaint closure. The PIU Safeguard specialist will coordinate the grievance redress process

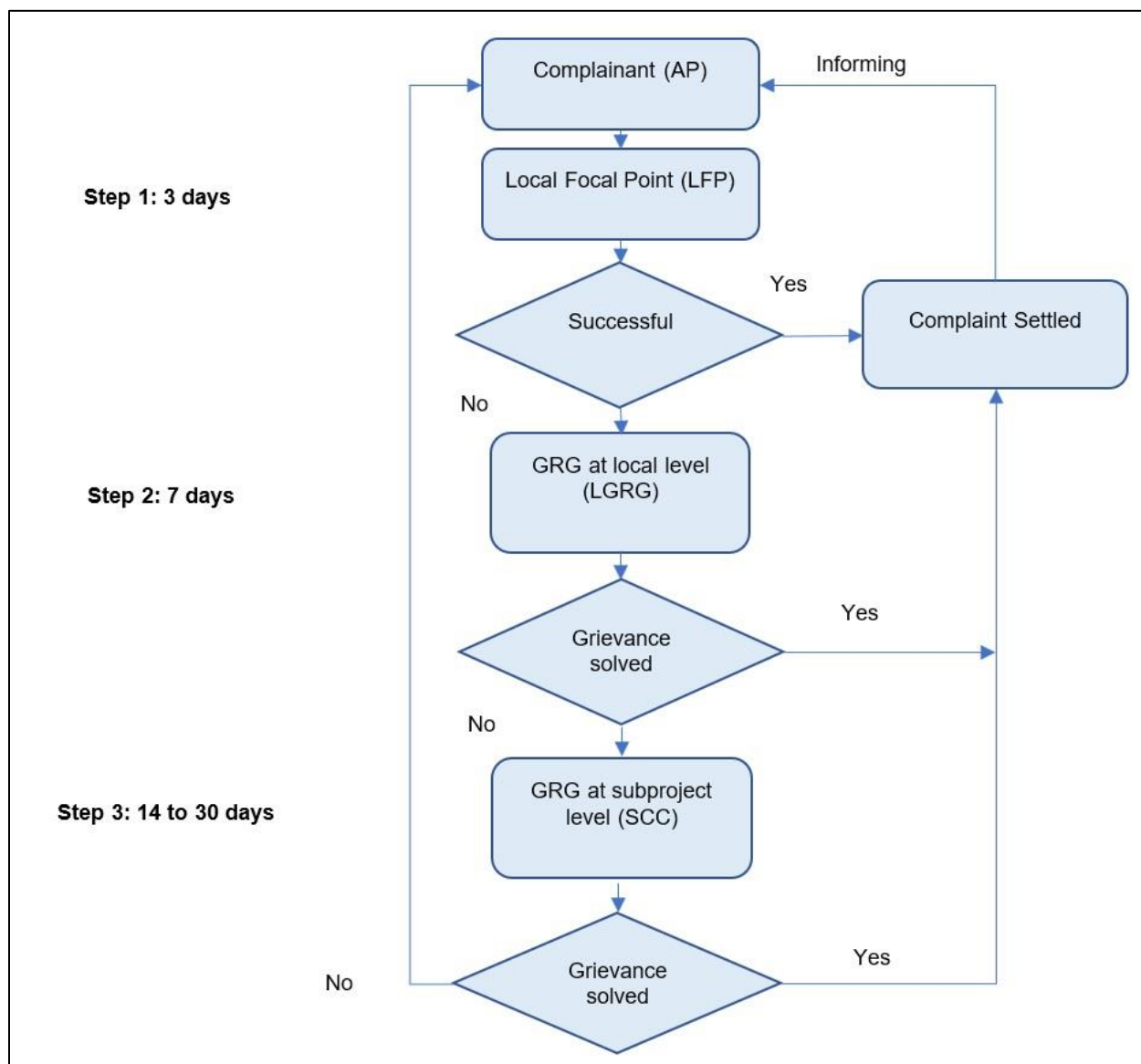
127. LFP will assist APs in formal submission of their complaints to GRG. The complaints and grievances will be addressed through the procedure described in **Table 10** and on **Figure 5** that further illustrates it.

Table 10: Grievance Redress Procedure

Step	Action level	Process	Timeline
1	Resolution by LFP	At initial stage, the LFP will give hearing to the complainant and try to give acceptable solutions. If the complainant is not satisfied with the solutions, then the complaint will be moved on to LGRG in written 3 days.	3 days
2	Resolution at local level by GRG (LGRG)	After receiving written complaint, the LFP will review and prepare a Case File for LGRG hearing and resolution in accordance with the proposed format. The LFP will register the AP's applications, accept the supporting documents for the complaint, and organize a LGRG meeting to discuss the case. The decision made by the majority of the LGRG members will be considered as final. This decision will be issued by the LFP and signed by the other LGRG members. The case records will be updated, LFP will inform the complainant about the decision within 7 days after the application date. If applicant is not satisfied with the decisions, LFP will apply with the complaint in writing to the GRG at the subproject level (SCC) and include an opinion and supporting documents prepared at the local level	7 days

3	Resolution of GRG at subproject level (SCC)	Upon receipt of a written complaint, SCC Secretary will review it and prepare a case file for hearing and resolution by SCC. A formal hearing will be held by SCC on the date set by the SCC Chairperson and the applicant. The SCC secretary (PIC) will contact the applicant and the SCC members will visit his/her village. The SCC secretary will record the applicant's statements and register all evidence. The decision made by the majority of the SCC members will be considered as final. This decision will be issued by the SCC Chairperson and signed by the other SCC members. The case records will be updated and PIU Safeguards Specialist will inform the complainant about the decision within 14-30 days.	14-30 days
---	---	--	------------

Figure 5: Grievance Redress Procedure



7.6. Additional mechanism

128. Any physical and legal person, any appellant can take his/her concern to the court at any stage of grievance redress. The GRGs will not restrict or influence the AP from applying to court for legal remedies.

129. If the complaint is found invalid, the GRG will formulate a response and send a written letter to the complainant, explaining the reasons of rejection.

130. In addition, ADB has its [Accountability Mechanism](#) Policy (2012)¹ that is to be accountable to people for ADB funded projects as a last resort mechanism. The accountability mechanism provides a forum where people adversely affected by ADB funded projects can voice and seek solutions to their problems and report alleged noncompliance of ADB's operational policies and procedures.

131. The complainant, if not satisfied with GRG's decision or even the court's decision, can appeal the case to Office of the Special Office Facilitator of ADB² The GRGs will not in any way impede APs' access to the ADB Accountability Mechanism.

132. All expenses incurred by affected households in grievance/complaint filing and its resolution will be covered by the project.

7.7. Complaint documentation

133. The PIU of the SWRA will document all grievances in both written and electronic forms. The grievance registration form is given in **appendix 11.5** LFP and PIC will be responsible for maintaining a grievance logbook (please see **appendix 11.6**) at the local and SCC levels, respectively. The grievance registration forms will be sent by the PIC to the PIU and consolidated monthly by PIU Safeguards Specialist. PIU Safeguards Specialist will analyze these documents through the PIC and include the results in the appropriate semi-annual environmental and social monitoring reports.

8. MITIGATION MEASURES DURING CONSTRUCTION

134. Although based on the studies during the construction any land acquisition and involuntary resettlement, physical or economic displacement, or temporary restrictions to land use has not been expected. However, during construction works that the following measures should be applied to eliminate any impacts

- The construction works shall be carried out after the agricultural season. This will be ensured by the farmers who shall be informed through WUA's about the temporary water scarcity problems during the construction period, prior to the construction works
- In case temporary work camps are required, construction of worker camps shall be located close to settlement areas but not near sensitive water resources.
- To reduce dust that will create problems at the residential areas and planted agricultural sites, a dust suppression system is provided that is moistening materials to optimal humidity. Besides that, the construction, spoil and excavation material shall be transported into or from the site by trucks covered with tarpaulin.
- The Contractor shall consider noise as an environmental constraint, which must be addressed in the planning and execution of the works. He shall take all reasonable measures to reduce noise to a minimum. The construction works will be limited to daytime and will be prohibited at night time and the weekends.

¹ <https://www.adb.org/site/accountability-mechanism/main>

² www.adb.org/site/accountability-mechanism/contacts

- The Contractor shall avoid the use of the agricultural fields during the construction activities. If the public access to the agricultural areas has been limited due to the construction activities the Contractor will provide alternative passages, routes, roads to the public.
- A traffic management plan will be provided by the Contractor including the routes of transportation; speed arrangements; locations of the sensitive areas like markets, schools, hospitals; and signage, etc. If any damage is given by the Contractor to the public roads or bridges located on the routes the contractor shall repair, recover or compensate it.
- The Contractor shall adhere to take the necessary procedures to secure the work site to prevent any accidents through construction of temporary fencing around the site in an appropriate height and type.
- During the construction works, the Contractor will only remove reeds and do stripping of vegetation, including trees planted or grown naturally on canal banks and canal beds. If necessary, will do stripping or removing vegetation along the canal. If tree felling is required, permission will be obtained from the local authorities. A countervailing measure could include planting new trees at a location designated by local environmental protection authorities.
- The contractors have been expected to hire local unemployed people to work as unskilled day labor, temporary during the civil works.

135. Any other preventive measures that might be arisen during the construction is expected to be adopted by PIU/PIC with agreement of other stakeholders of the hydro posts in Chui zone.

136. If required any other social concern, shall be tried to be properly solved by the GRG under the Grievance Redress Mechanism (GRM) of the Project which has been formed by the PIU.

137. All project activities will be implemented in accordance with the ADB SPS, if in the course of implementation there are cases of impact on any private legal / illegal property, then all necessary measures will be taken to mitigate them.

9. INSTITUTIONAL ARRANGEMENT AND REPORTING

138. Main institutions involved in project implementation in terms of safeguards monitoring and reporting are PIU, Water Resources Services under the Ministry of Agriculture (WRS), PIU, WUAs, Contractor, PIC and GRGs.

9.1. ADB

139. ADB will be the funding agency of the project, including LAR activities except land acquisition costs. In addition to funding, ADB will periodically review project and SDDR implementation status as well as provide clearance for contract awards and the signing/initiation of civil works on the project.

140. Main responsibilities of ADB at loan implementation stage are:

- SDDR/LARP approval and endorsement;
- To Disclose of SDDR/LARP;
- To review and approve semi-annual social monitoring reports, LARP implementation compliance report (if any);
- To issue “no objection” decision to commence the construction.

9.2. WRS/PIU

141. The Water Resources Services under the Ministry of Agriculture (WRS) is the Executing Agency (EA). As the EA, WRS has the overall responsibility for project implementation.

142. Main responsibilities of WRS and PIU at loan implementation stage are:

- To select and mobilization of a design consultant with approved national and international resettlement specialists and inclusion of costs and requirements for resettlement related activities in the tender/contract documents;
- To develop the action plan of LAR-related processes;
- To agree on key implementing mechanisms on land acquisition and resettlement;
- To engage in land acquisition and resettlement committee (LARC);
- To select the consultant for DMS, census, socioeconomic study (SES) and valuation, training LARC on ADB SPS and LAR;
- Community consultations;
- To establish GRGs and appoint LFPs;
- To approve the valuation report by the relevant authority;
- To assess in legalization processes;
- To disclose SDDR/LARP on project ADB website;
- Implementation of LARP;
- To monitor and reporting on LARP implementation;
- To prepare of LARP compliance report for ADB revision and approval;
- To hand over LAR impacted subsection for construction.

9.3. PIC

143. The PIU specialists and PIC Construction Supervisor and social safeguards specialists will be responsible for monitoring social impacts and proper implementation of the various preventive actions and mitigation measures required. This will entail regular site visits to verify that social impacts are under control and appropriate preventive actions and/or mitigation measures have been implemented in accordance with national legislation and ADB SPS.

144. Task and responsibilities of PIC at detailed design stage include:

- To assists PIU in conducting social due diligence activities, SDDR/LARP preparation;
- To contribute to agreeing on key implementing mechanisms on LAR;
- To assists PIU in selection of the sub-consultant(s) for detailed measurement survey (DMS) and valuation;
- To train LARC on ADB SPS and LAR;
- To hold community consultations.

145. At project implementation, PIC also will assist WRS/PIU in implementing LARP and to carry out monitoring and reporting.

9.4. WUAs

146. Any complaints during the subproject implementation period will be registered and addressed by the GRGs.

9.5. Monitoring and reporting

147. Internal monitoring of the subproject implementation will be carried by PIU with the assistance of PIC

148. The objectives of the monitoring are;

- To identify social safeguards related issues, including potential, if any;
- To identify immediate/rapid response methods to mitigate issues identified or potential issues, if any;
- To identify immediate/rapid response methods to mitigate issues identified or potential issues, if any;
- To that the GRM is functioning and grievances, if any, are being addressed timely and effectively.

149. PIU will report overall social safeguards compliance through semiannual social safeguards monitoring reports (SASSMR). The SDDR and SASSMRs will be posted on the ADB and WRS websites upon approval of ADB. Completion of the detailed design and obtaining the corresponding approval of the subproject is planned for the end of the 2nd quarter of 2022 then this SDDR will be updated accordingly.

10. CONCLUSION AND RECOMMENDATION

150. Based on the findings of due diligence exercise, some positive conclusions reached in terms of social issues. According to social surveys conducted and voting put during the stakeholder engagement meetings, it is understandable that there is not any stakeholder who is against the project.

151. All stakeholders forecast that hydro posts in Chui zone are going to be a beneficial project with minimum environmental or social adverse effects.

152. In parallel to SDDR the Initial Environmental Examination (IEE) has also been issued and field investigations have been carried-out within the scope of Climate Change and Disaster-Resilient Water Resources Sector Project for identifying the project impacts on environment and social aspects.

153. Finalizing main findings and outcomes of conducted social due diligence the following conclusions and recommendations have to be taken into consideration by institutions involved in project implementation.

10.1. Conclusions

154. It is concluded that, as per ADB Safeguard Policy Statement, the subproject is considered as subproject with "no involuntary land acquisition and resettlement". Important findings of the study in connection to social safeguard issues are

- Generally, all rehabilitation works to be executed by means of re-constructing existing old buildings after demolishing of those. This is why, it may be deemed that this sub-project will not require any land acquisition which will possibly cause negative social effects on local people.

- Rehabilitation of hydro-post and especially establishing early warning system are of vital importance both for ensuring security of local people that are likely to be affected by any possible climatic disaster that may be occurring because of lack of these mentioned systems and for sustainability of agricultural activities and in parallel, its inputs to local people.
- The required land for construction work is owned by the state and in unlimited use of Rayon (District) Unit of WRS (RVK);
- There is no possibility of any adverse impact in terms of losing income or livelihood;
- As a result, no dislocation, demolition of houses or structures will be required due to the construction and rehabilitation activities.

155. As the results of the study suggest that the impact of this project does not incur any land acquisition, resettlement or economic displacement. This subproject can be categorized as “C” for Involuntary Resettlement (IR) impact as per the ADB SPS.

156. In case any claims or complaints are submitted during the project implementation period, an effective and efficient Grievance Redress Mechanism will enhance provision of timely and sensible hearings and facilitate solutions.

157. Social Safeguard Specialist of PIU will continue to conduct regular monitoring to verify that there are no project impacts caused by the project implementation. Social Safeguard Specialist will oversee all subprojects to ensure that safeguard requirements are met during construction.

158. Social Safeguard Specialist of PIC develops a grievance redress mechanism, develops a grievance log, provides GRM training for CDT, and assists PIU in preparing with Semi-annual Social Safeguards Monitoring Report.

159. LFP to keep records, registration in a special journal of complaints.

160. Keep a record of incoming complaints from the LFP in a specially developed e-journal of complaints, registration of incoming complaints and provides monitoring and control of the resolution of complaints.

161. The Contractor engaged in construction and rehabilitation works will also consider implementation and monitoring of the following social and gender issues during the construction period specified at their assignments.

162. There is not any grievance recorded up to now.

10.2. Mitigation measures

163. Based on the findings of due diligence exercise, the following recommendations are provided with an objective to ensure full compliance with ADB requirements;

- Service from local Non-Governmental Organizations may be hired for regular dissemination of information and public consultation meetings should be organized frequently
- The construction contractor should employ local workforce as much as he can in order to prevent possible social negative impacts to which important workforce will lead.
- All administrative permissions should be obtained by the construction contractor and declared to WRS/PIU in advance of commencement of work. The construction contractor should not be allowed to start to work without obtaining these permissions
- Public consultation with local communities and nearby households / residents will be held on regular basis at all stages of project implementation for information dissemination,

record any concerns / complaints and prompt resolution of the concerns / complaints within GRM established for the project.

- During the construction PIU Safeguard Specialist, with the support of PIC will monitor temporary land use and ensure that in case the additional plots of land are required for temporary use during construction activities, the Construction Contractor obtains relevant agreements allowing the use of such lands. Moreover, after completion of civil works the lands taken for temporary use (if any) will be reinstated to their pre project conditions by Construction Contractor and rent fees shall be fully paid to the owners of plots of lands
- If unanticipated irreversible impacts appear during implementation of project works are due to restriction of access to the land due to contractor activities, it will be immediately reported to the PIU/PIC and Contractor will stop the construction work activities in the affected areas until the corrective action plan will be approved and implemented in consultation with ADB safeguards team, complying with the LARF of the project. Nonetheless in such sections the project works will be kept on hold till ADB cleared Correction Action Plan is implemented and confirmed as such.
- Social and environmental safeguard monitoring will be conducted and the results will be reflected in semiannual social safeguards monitoring reports during the construction period and after the construction works are completed in order to make assessment of project impacts and develop mitigation measures for any other negative impacts on lands or local communities and nearby households / residents (if any).
- Existing project monitoring arrangements such as SASSMR should continue until the end of project to understand the implementation of SDDR provisions

11. APPENDIXES

11.1. LAR check list of Chui hydro post

Проект L3746/G0632-KGZ: «Повышение устойчивости водных ресурсов к изменению климата и стихийным бедствиям»

Компонент Проекта: «Повышение потенциала по управлению рисками стихийных бедствий на национальном уровне»

Подпроект/объект: Гидропост Чон-Келин - Карагайлым Бучлак

Местоположение (пикет, контур/название участка): Кан-Оброкский П.О. Вильямский р-н

Дата проведения скрининга: «16» 09 2020г.

Понятие «Изъятие земли и переселение» независимо от правового статуса в данном контексте включает в себя физическое переселение (перемещение, утрата жилой земельной собственности или крова) и экономического переселения (утрата земельной собственности, имущества, доступа к имуществу, источника дохода или средств к существованию) в результате (i) принудительного приобретения земли, или (ii) наложения принудительного ограничения на использование земли или доступ к установленным законом парковым и другим охраняемым зонам, вне зависимости от того, являются ли такие потери или принудительные ограничения полными или частичными, постоянными или временными.

Контрольный список вопросов по воздействию на вынужденное переселение

№	Возможные последствия вынужденного переселения	Да	Нет	Не известно	Примечания
Вынужденное изъятие земли					
1.	Будет ли изъятие земли?		<input checked="" type="checkbox"/>		
2.	Известны ли места изъятия земли?		<input checked="" type="checkbox"/>		
3.	Известен ли статус собственности и текущее использование земли для изъятия?	<input checked="" type="checkbox"/>			
4.	Будет ли потеря жилья и жилой земли из-за изъятия земли?		<input checked="" type="checkbox"/>		
5.	Будет ли потеря сельскохозяйственное и другое производственное имущество из-за изъятия земли?		<input checked="" type="checkbox"/>		
6.	Будут ли потери урожая, деревьев и основных средств из-за изъятия земли?		<input checked="" type="checkbox"/>		
7.	Будут ли потери бизнеса в связи с изъятием земли?		<input checked="" type="checkbox"/>		
8.	Будет ли потеря источников дохода и средств к существованию из-за изъятия земли?		<input checked="" type="checkbox"/>		
9.	Будет ли физическое перемещение ПП? [] Нет [] Да Если да, примерно сколько (ПД/ПЛ)?		<input checked="" type="checkbox"/>		
Непреднамеренные ограничения на землепользование или доступ к законным паркам и охраняемым территориям					
10.	Потеряют ли люди доступ к природным ресурсам, общественным объектам и услугам?				
11.	Если изменится землепользование, окажет ли оно негативное влияние на социально-экономическую деятельность?		<input checked="" type="checkbox"/>		
12.	Будет ли ограничен доступ к земле и ресурсам, принадлежащим общественности или государству?		<input checked="" type="checkbox"/>		
Количественная оценка земли, подлежащей изъятию					
	Предварительный расчёт площади земли, которая потребуется для Проекта? [] Нет [] Да Если да, примерно сколько? _____ гектар				
Информация о перемещенных лицах:					
	Оценочное число домохозяйств/лиц, которые будут перемещены Проектом? [] Нет [] Да Если да, примерно сколько?				
	Являются ли кто-либо из них бедными, женщинами-главами домохозяйств или подвержены рискам бедности? [] Нет [] Да Если да, примерно сколько?				
	Относятся ли кто-либо из перемещенных лиц к группе коренных народов или этнических меньшинств? [] Нет [] Да Если да, примерно сколько?				

Специалист ОРП по социальным защитным мерам _____ К.Жунусбаев

Специалист Консультанта (Темелсу) по защитным мерам _____ Н.Кадьяралиева

Глава/представитель от Исполнительного агентства _____
Исполнитель ИЗО УПБТ Коргошмуралов

Глава/представитель от Исполнительного агентства _____
Сыдыков Т.Б.

Представитель органа местного самоуправления/АО _____
Сыдыков Т.Б.

Фото участков, которые потенциально могут быть подвержены воздействию (местоположение/название объекта)

1

Компонент Проекта: «Повышение потенциала по управлению рисками стихийных бедствий на национальном уровне»
 Подпроект/объект: Гидропост р-н Чолок
 Местоположение (пикет, контур/название участка): С. ЧОЛОК, Контур - Усть-Бердский АӨ.
 Дата проведения скрининга: « 15 » 09 2020г.

Понятие «Изъятие земли и переселение» независимо от правового статуса в данном контексте включает в себя физическое переселение (перемещение, утрата жилой земельной собственности или крова) и экономического переселения (утрата земельной собственности, имущества, доступа к имуществу, источника дохода или средств к существованию) в результате (i) принудительного приобретения земли, или (ii) наложения принудительного ограничения на использование земли или доступ к установленным законом парковым и другим охраняемым зонам, вне зависимости от того, являются ли такие потери или принудительные ограничения полными или частичными, постоянными или временными.

Контрольный список вопросов по воздействию на вынужденное переселение

№	Возможные последствия вынужденного переселения	Да	Нет	Не известно	Примечания
Вынужденное изъятие земли					
1.	Будет ли изъятие земли?		X		
2.	Известны ли места изъятия земли?		X		Нет информации
3.	Известен ли статус собственности и текущее использование земли для изъятия?		X		
4.	Будет ли потеря жилья и жилой земли из-за изъятия земли?		X		
5.	Будет ли потеря сельскохозяйственное и другое производственное имущество из-за изъятия земли?		X		
6.	Будут ли потери урожая, деревьев и основных средств из-за изъятия земли?		X		
7.	Будут ли потери бизнеса в связи с изъятием земли?		X		
8.	Будет ли потеря источников дохода и средств к существованию из-за изъятия земли?		X		
9.	Будет ли физическое перемещение ПЛ? [] Нет [] Да Если да, примерно сколько (ПДУ/ПЛ)?		X		
Непреднамеренные ограничения на землепользование или доступ к законным паркам и охраняемым территориям					
10.	Потеряют ли люди доступ к природным ресурсам, общественным объектам и услугам?		X		
11.	Если изменится землепользование, окажет ли оно негативное влияние на социально-экономическую деятельность?		X		
12.	Будет ли ограничен доступ к земле и ресурсам, принадлежащим общественности или государству?		X		
Количественная оценка земли, подлежащей изъятию					
Предварительный расчёт площади земли, которая потребуется для Проекта? [] Нет [] Да Если да, примерно сколько? _____ гектар					
Информация о перемещенных лицах:					
Оценочное число домохозяйств/лиц, которые будут перемещены Проектом? [] Нет [] Да Если да, примерно сколько? _____					
Являются ли кто-либо из них бедными, женщинами-главами домохозяйств или подвержены рискам бедности? [] Нет [] Да Если да, примерно сколько? _____					
Относятся ли кто-либо из перемещенных лиц к группе коренных народов или этнических меньшинств? [] Нет [] Да Если да, примерно сколько? _____					

Специалист ОРП по социальным защитным мерам (подпись) К. Жунусбаев
 Специалист Консультанта (Темелсу) по защитным мерам (подпись) Н. Кадыралиева
 Глава/представитель от Исполнительного агентства (подпись) М. Маламбаев М.
 Глава/представитель от Исполнительного агентства (подпись) _____
 Представитель органа местного самоуправления/АО (подпись) _____



Фото участков, которые потенциально могут быть подвержены воздействию (местоположение/название объекта)

Компонент Проекта: «Повышение потенциала по управлению рисками стихийных бедствий на национальном уровне»
 Подпроект/объект: Гидропост р. Кара-Куджур, с. Саро-Булак
 Местоположение (пикет, контур/название участка): «18» сел. Саро-Булак, Саро-Булакский с/п. о.п.
 Дата проведения скрининга: «18» сент. 2020г.

Понятие «Изъятие земли и переселение» независимо от правового статуса в данном контексте включает в себя физическое переселение (перемещение, утрата жилой земельной собственности или крова) и экономического переселения (утрата земельной собственности, имущества, доступа к имуществу, источника дохода или средств к существованию) в результате (i) принудительного приобретения земли, или (ii) наложения принудительного ограничения на использование земли или доступ к установленным законом парковым и другим охраняемым зонам, вне зависимости от того, являются ли такие потери или принудительные ограничения полными или частичными, постоянными или временными.

Контрольный список вопросов по воздействию на вынужденное переселение

№	Возможные последствия вынужденного переселения	Да	Нет	Не известно	Примечания
Вынужденное изъятие земли					
1.	Будет ли изъятие земли?				
2.	Известны ли места изъятия земли?				
3.	Известен ли статус собственности и текущее использование земли для изъятия?				
4.	Будет ли потеря жилья и жилой земли из-за изъятия земли?				
5.	Будет ли потеряно сельскохозяйственное и другое производственное имущество из-за изъятия земли?				
6.	Будут ли потери урожая, деревьев и основных средств из-за изъятия земли?				
7.	Будут ли потери бизнеса в связи с изъятием земли?				
8.	Будет ли потеря источников дохода и средств к существованию из-за изъятия земли?				
9.	Будет ли физическое перемещение ПЛ? [] Нет [] Да Если да, примерно сколько (ПД/ПЛ)?				
Непреднамеренные ограничения на землепользование или доступ к законным паркам и охраняемым территориям					
10.	Потеряют ли люди доступ к природным ресурсам, общественным объектам и услугам?				
11.	Если изменится землепользование, окажет ли оно негативное влияние на социально-экономическую деятельность?				
12.	Будет ли ограничен доступ к земле и ресурсам, принадлежащим общественности или государству?				
Количественная оценка земли, подлежащей изъятию					
	Предварительный расчёт площади земли, которая потребуется для Проекта? [] Нет [] Да Если да, примерно сколько? _____ гектар				
Информация о перемещенных лицах:					
	Оценочное число домохозяйств/лиц, которые будут перемещены Проектом? [] Нет [] Да Если да, примерно сколько?				
	Являются ли кто-либо из них бедными, женщинами-главами домохозяйств или подвержены рискам бедности? [] Нет [] Да Если да, примерно сколько?				
	Относятся ли кто-либо из перемещенных лиц к группе коренных народов или этнических меньшинств? [] Нет [] Да Если да, примерно сколько?				

Специалист ОРП по социальным защитным мерам К. Жунусбаев
 Специалист Консультанта (Темелсу) по защитным мерам Н. Кадыралиева
 Глава/представитель от Исполнительного агентства Э. Максимова
 Глава/представитель от Исполнительного агентства И. Максимова
 Представитель органа местного самоуправления/АО Э. Максимова

Фото участков, которые потенциально могут быть подвержены воздействию (местоположение/название объекта)

Компонент Проекта: «Повышение потенциала по управлению рисками стихийных бедствий на национальном уровне»
 Подпроект/объект: Гидропост речек - р. Ичкэ - с.Ауу
 Местоположение (пикет, контур/название участка): Наранская обл., Кочкорский р-н
Каро-Сундуй айылмай айылы, ул-к 42-Ангес,
 Дата проведения скрининга: «16» 09 2020г. контур 24-07.

Понятие «Изъятие земли и переселение» независимо от правового статуса в данном контексте включает в себя физическое переселение (перемещение, утрата жилой земельной собственности или крова) и экономического переселения (утрата земельной собственности, имущества, доступа к имуществу, источника дохода или средств к существованию) в результате (i) принудительного приобретения земли, или (ii) наложения принудительного ограничения на использование земли или доступ к установленным законом парковым и другим охраняемым зонам, вне зависимости от того, являются ли такие потери или принудительные ограничения полными или частичными, постоянными или временными.

Контрольный список вопросов по воздействию на вынужденное переселение

№	Возможные последствия вынужденного переселения	Да	Нет	Не известно	Примечания
Вынужденное изъятие земли					
1.	Будет ли изъятие земли?		X		
2.	Известны ли места изъятия земли?		X		
3.	Известен ли статус собственности и текущее использование земли для изъятия?		X		
4.	Будет ли потеря жилья и жилой земли из-за изъятия земли?		X		
5.	Будет ли потеряно сельскохозяйственное и другое производственное имущество из-за изъятия земли?		X		
6.	Будут ли потери урожая, деревьев и основных средств из-за изъятия земли?		X		
7.	Будут ли потери бизнеса в связи с изъятием земли?		X		
8.	Будет ли потеря источников дохода и средств к существованию из-за изъятия земли?		X		
9.	Будет ли физическое перемещение ПЛ? [] Нет [] Да Если да, примерно сколько (ПД/ПЛ)?		X		
Непреднамеренные ограничения на землепользование или доступ к законным паркам и охраняемым территориям					
10.	Потеряют ли люди доступ к природным ресурсам, общественным объектам и услугам?		X		
11.	Если изменится землепользование, окажет ли оно негативное влияние на социально-экономическую деятельность?		X		
12.	Будет ли ограничен доступ к земле и ресурсам, принадлежащим общественности или государству?		X		
Количественная оценка земли, подлежащей изъятию					
	Предварительный расчёт площади земли, которая требуется для Проекта? [] Нет [] Да Если да, примерно сколько? _____ гектар				
Информация о перемещенных лицах:					
	Оценочное число домохозяйств/лиц, которые будут перемещены Проектом? [] Нет [] Да Если да, примерно сколько? _____				
	Являются ли кто-либо из них бедными, женщинами-главами домохозяйств или подвержены рискам бедности? [] Нет [] Да Если да, примерно сколько? _____				
	Относятся ли кто-либо из перемещенных лиц к группе коренных народов или этнических меньшинств? [] Нет [] Да Если да, примерно сколько? _____				

Специалист ОРП по социальным защитным мерам (подпись) _____ К. Жунусбаев
 Специалист Консультанта (Темелсу) по защитным мерам (подпись) Н.М. _____ Н. Кадыралиева
 Глава/представитель от Исполнительного агентства (подпись) Мамасбаев М. _____
Сенгер МАО УИИ Каргулуромб (должность)
 Глава/представитель от Исполнительного агентства (подпись) _____ Ф.И.О. _____
 Представитель органа местного самоуправления/АО (подпись) _____ Ф.И.О. _____



Фото участков, которые потенциально могут быть подвержены воздействию (местоположение/название объекта)

Проект L3746/G0632-KGZ: «Повышение устойчивости водных ресурсов к изменению климата и стихийным бедствиям»

Компонент Проекта: «Повышение потенциала по управлению рисками стихийных бедствий на национальном уровне»

Подпроект/объект: Гидропост р. Ала-Тора - устье р. Кашка - Суу

Местоположение (ликет, контур/название участка): ~~Средняя часть водохранилища р.-н, восточная до-
Земельный участок "Балтис"~~

Дата проведения скрининга: «14» сентября 2020г.

Понятие «Изъятие земли и переселение» независимо от правового статуса в данном контексте включает в себя физическое переселение (перемещение, утрата жилой земельной собственности или крова) и экономического переселения (утрата земельной собственности, имущества, доступа к имуществу, источника дохода или средства к существованию) в результате (i) принудительного приобретения земли, или (ii) наложения принудительного ограничения на использование земли или доступ к установленным законом парковым и другим охраняемым зонам, вне зависимости от того, являются ли такие потери или принудительные ограничения полными или частичными, постоянными или временными.

Контрольный список вопросов по воздействию на вынужденное переселение

№	Возможные последствия вынужденного переселения	Да	Нет	Не известно	Примечания
Вынужденное изъятие земли					
1.	Будет ли изъятие земли?		<input checked="" type="checkbox"/>		
2.	Известны ли места изъятия земли?		<input checked="" type="checkbox"/>		
3.	Известен ли статус собственности и текущее использование земли для изъятия?		<input checked="" type="checkbox"/>		
4.	Будет ли потеря жилья и жилой земли из-за изъятия земли?		<input checked="" type="checkbox"/>		
5.	Будет ли потеряно сельскохозяйственное и другое производственное имущество из-за изъятия земли?		<input checked="" type="checkbox"/>		
6.	Будут ли потери урожая, деревьев и основных средств из-за изъятия земли?		<input checked="" type="checkbox"/>		
7.	Будут ли потери бизнеса в связи с изъятием земли?		<input checked="" type="checkbox"/>		
8.	Будет ли потеря источников дохода и средств к существованию из-за изъятия земли?		<input checked="" type="checkbox"/>		
9.	Будет ли физическое перемещение ПЛ? <input type="checkbox"/> Нет <input type="checkbox"/> Да Если да, примерно сколько (ПД/ПЛ)?		<input checked="" type="checkbox"/>		
Непреднамеренные ограничения на землепользование или доступ к законным паркам и охраняемым территориям					
10.	Потеряют ли люди доступ к природным ресурсам, общественным объектам и услугам?		<input checked="" type="checkbox"/>		
11.	Если изменится землепользование, окажет ли оно негативное влияние на социально-экономическую деятельность?		<input checked="" type="checkbox"/>		
12.	Будет ли ограничен доступ к земле и ресурсам, принадлежащим общественности или государству?		<input checked="" type="checkbox"/>		
Количественная оценка земли, подлежащей изъятию					
	Предварительный расчёт площади земли, которая потребуется для Проекта? <input type="checkbox"/> Нет <input type="checkbox"/> Да Если да, примерно сколько? _____ гектар				
Информация о перемещенных лицах:					
	Оценочное число домохозяйств/лиц, которые будут перемещены Проектом? <input type="checkbox"/> Нет <input type="checkbox"/> Да Если да, примерно сколько? _____				
	Являются ли кто-либо из них бедными, женщинами-главами домохозяйств или подвержены рискам бедности? <input type="checkbox"/> Нет <input type="checkbox"/> Да Если да, примерно сколько? _____				
	Относятся ли кто-либо из перемещенных лиц к группе коренных народов или этнических меньшинств? <input type="checkbox"/> Нет <input type="checkbox"/> Да Если да, примерно сколько? _____				

Специалист ОРП по социальным защитным мерам (подпись) К. Жунусбаев

Специалист Консультанта (Темелсу) по защитным мерам (подпись) Н. Кадыралиева

Глава/представитель от Исполнительного агентства (подпись) Н. А. Аманжолбаев

Глава/представитель от Исполнительного агентства (подпись) Ф. И. О.

Представитель органа местного самоуправления/АО (подпись) А. Б. Рахманов

Фото участков, которые потенциально могут быть подвержены воздействию (местоположение/название объекта)

Компонент Проекта: «Повышение потенциала по управлению рисками стихийных бедствий на национальном уровне»

Подпроект/объект: Гидропост КАРАЖОН - при с/п

Местоположение (пикет, контур/название участка): национальный центр, Кочкорсай р-н, Кара - султанов Абдылхайыр адыр, ул-к Чыңгыз, конт

Дата проведения скрининга: « 16 » 09 2020г.

Понятие «Изъятие земли и переселение» независимо от правового статуса в данном контексте включает в себя физическое переселение (перемещение, утрата жилой земельной собственности или крова) и экономического переселения (утрата земельной собственности, имущества, доступа к имуществу, источника дохода или средств к существованию) в результате (i) принудительного приобретения земли, или (ii) наложения принудительного ограничения на использование земли или доступ к установленным законом парковым и другим охраняемым зонам, вне зависимости от того, являются ли такие потери или принудительные ограничения полными или частичными, постоянными или временными.

Контрольный список вопросов по воздействию на вынужденное переселение

№	Возможные последствия вынужденного переселения	Да	Нет	Не известно	Примечания
Вынужденное изъятие земли					
1.	Будет ли изъятие земли?			X	
2.	Известны ли места изъятия земли?				
3.	Известен ли статус собственности и текущее использование земли для изъятия?				
4.	Будет ли потеря жилья и жилой земли из-за изъятия земли?			X	
5.	Будет ли потеряно сельскохозяйственное и другое производственное имущество из-за изъятия земли?				
6.	Будут ли потери урожая, деревьев и основных средств из-за изъятия земли?			X	
7.	Будут ли потери бизнеса в связи с изъятием земли?				
8.	Будет ли потеря источников дохода и средств к существованию из-за изъятия земли?			X	
9.	Будет ли физическое перемещение ПП? [] Нет [] Да Если да, примерно сколько (ПД/ПЛ)?				
Непреднамеренные ограничения на землепользование или доступ к законным паркам и охраняемым территориям					
10.	Потеряют ли люди доступ к природным ресурсам, общественным объектам и услугам?			X	
11.	Если изменится землепользование, окажет ли оно негативное влияние на социально-экономическую деятельность?				
12.	Будет ли ограничен доступ к земле и ресурсам, принадлежащим общественности или государству?			X	
Количественная оценка земли, подлежащей изъятию					
Предварительный расчёт площади земли, которая потребуется для Проекта? [] Нет [] Да Если да, примерно сколько? _____ гектар					
Информация о перемещенных лицах:					
Оценочное число домохозяйств/лиц, которые будут перемещены Проектом? [] Нет [] Да Если да, примерно сколько? _____					
Являются ли кто-либо из них бедными, женщинами-главами домохозяйств или подвержены рискам бедности? [] Нет [] Да Если да, примерно сколько? _____					
Относятся ли кто-либо из перемещенных лиц к группе коренных народов или этнических меньшинств? [] Нет [] Да Если да, примерно сколько? _____					

Специалист ОРП по социальным защитным мерам (подпись) К.Жунусбаев

Специалист Консультанта (Темелсу) по защитным мерам (подпись) Н.Кадырбаев

Глава/представитель от Исполнительного агентства (подпись) Жапарбаев М.

Интендер МАО УГКБ Коргоулдролото (должность)

Глава/представитель от Исполнительного агентства (подпись) Ф.И.О.

(подпись) Ф.И.О.

Представитель органа местного самоуправления/АО (подпись) Ф.И.О.



Фото участков, которые потенциально могут быть подвержены воздействию (местоположение/название объекта)

Проект L3746/G0632-KGZ: «Повышение устойчивости водных ресурсов к изменению климата и стихийным бедствиям»

Компонент Проекта: «Повышение потенциала по управлению рисками стихийных бедствий на национальном уровне»
 Подпроект/объект: Гидропост р. Исар-Ата - Волна устье р. Тунук (с. Юрбала)
 Местоположение (ликет, контур/название участка): Султанд обл. Волна-Амнатский р-н, Соьг-Ташский АО, контур 7/3.
 Дата проведения скрининга: « 14 » 09 2020г.

Понятие «Изъятие земли и переселение» независимо от правового статуса в данном контексте включает в себя физическое переселение (перемещение, утрата жилой земельной собственности или крова) и экономического переселения (утрата земельной собственности, имущества, доступа к имуществу, источника дохода или средств к существованию) в результате (i) принудительного приобретения земли, или (ii) наложения принудительного ограничения на использование земли или доступ к установленным законом парковым и другим охраняемым зонам, вне зависимости от того, являются ли такие потери или принудительные ограничения полными или частичными, постоянными или временными.

Контрольный список вопросов по воздействию на вынужденное переселение

№	Возможные последствия вынужденного переселения	Да	Нет	Не известно	Примечания
Вынужденное изъятие земли					
1.	Будет ли изъятие земли?			✓	
2.	Известны ли места изъятия земли?			✓	
3.	Известен ли статус собственности и текущее использование земли для изъятия?			✓	
4.	Будет ли потеря жилья и жилой земли из-за изъятия земли?			✓	
5.	Будет ли потеря сельскохозяйственное и другое производственное имущество из-за изъятия земли?			✓	
6.	Будут ли потери урожая, деревьев и основных средств из-за изъятия земли?			✓	
7.	Будут ли потери бизнеса в связи с изъятием земли?			✓	
8.	Будет ли потеря источников дохода и средств к существованию из-за изъятия земли?			✓	
9.	Будет ли физическое перемещение ПП? <input type="checkbox"/> Нет <input type="checkbox"/> Да Если да, примерно сколько (ПД/ПП)?			✓	
Непреднамеренные ограничения на землепользование или доступ к законным паркам и охраняемым территориям					
10.	Потеряют ли люди доступ к природным ресурсам, общественным объектам и услугам?			✓	
11.	Если изменится землепользование, окажет ли оно негативное влияние на социально-экономическую деятельность?			✓	
12.	Будет ли ограничен доступ к земле и ресурсам, принадлежащим общественности или государству?			✓	
Количественная оценка земли, подлежащей изъятию					
	Предварительный расчёт площади земли, которая потребуется для Проекта? <input type="checkbox"/> Нет <input type="checkbox"/> Да Если да, примерно сколько? _____ гектар				
Информация о перемещенных лицах:					
	Оценочное число домохозяйств/лиц, которые будут перемещены Проектом? <input type="checkbox"/> Нет <input type="checkbox"/> Да Если да, примерно сколько?				
	Являются ли кто-либо из них бедными, женщинами-главами домохозяйств или подвержены рискам бедности? <input type="checkbox"/> Нет <input type="checkbox"/> Да Если да, примерно сколько?				
	Относятся ли кто-либо из перемещенных лиц к группе коренных народов или этнических меньшинств? <input type="checkbox"/> Нет <input type="checkbox"/> Да Если да, примерно сколько?				

Специалист ОРП по социальным защитным мерам (подпись) К. Жунусбаев
 Специалист Консультанта (Темелсу) по защитным мерам (подпись) Н. М. Н. Кадыралиева
 Глава/представитель от Исполнительного агентства (подпись) М. Мамрабаев М.
Центральный ИЭО УПДТ Казгосиндроме (должность)
 Глава/представитель от Исполнительного агентства (подпись) Ф. И. О. (должность)
 Представитель органа местного самоуправления/АО (подпись) Д. Мамрашев М. Т. (должность)

Фото участков, которые потенциально могут быть подвержены воздействию (местоположение/название объекта)

11.2. List of Public consultation meetings

СПИСОК УЧАСТНИКОВ				
общественных обсуждений/слушаний по проекту				
Оценка воздействия на окружающую среду и социальную среду (ОВОС)				
"Повышение устойчивости водных ресурсов к изменению климата и стихийным бедствиям – подпроект по каналу Осмон"				
№	ФИО	Должность	Контактные данные/телефон	Подпись
1.	Шеймуров А.Т.	фермер	0556 33 2828	
2.	Ширинбеков В.С.Т	фермер	0556 34 2400	
3.	Алиев А.	фермер - пенсионер	0708 46 5541	
4.	Касимкулов В.С.А	фермер	0700 04 14 98	
5.	Самановичева К	фермер	0700 33 8234	
6.	Тортомонов Т	фермер	0707 88 8889	
7.	Бейшеналиев В.К	фермер	0707 40 0415	
8.	Айтибаев К.С	фермер	0702 17 1662	
9.	Амиров А	фермер а/о	0707 94 0660	
10.	Суров А	фермер	0755 99 6117	
11.	Эров К	фермер	0755 33 8589	
12.	Найбаев Т.	вед. спец. "Бизнес РОП"	0709 78 6782	
13.	Мусабаев Р	Мурад, Ак-Бейши	0501 17 2733	
14.	Саманов Н.	Саманов, Ак-Бейши	0555 99 5612	
15.	Мамбетов Б		0706 78 3734	
16.	Абдурашипов Н.Т.	Директор А/М Караул А/о	0805 57 1121	

№	ФИО	Должность	Контактные данные/телефон	Подпись
17.	Касимов Айбек.	Ак-Бешим	0707 527 105	
18.	Касимов Н. И	Ак-Бешим фермер	0700 865 883	
19.	Дубров И. Т.	с. Виноградное совхоза	052717727	
20.	Лобаяв Р. Ш.	с. Виноградное совхоза	0556 2008 73	
21.	Бекмуров. Мамик.	с. Чуи		
22.	Султоналиков. Б.			
23.	Кривошап. В.			
24.	Ахмеджолов А. Т.	с. Чуи	0550 052859	
25.	Талантбеков А. Т.	с. Чуи	09999 7777 2	
26.	Муратов Р. В.	с. Саяс	0555 380508	
27.	Бекмуратов В. Ш.	с. Виноградное	0704167 872	
28.	Солтанов Б. К.	с. Ак-Бешим	0552 799469	
29.	Чаликеев. А. Т.	с. Ак-Бешим		
30.	Чаликеев А. Т.	с. Чуи		
31.	Турмурадов А.	с. Чуи	0709526742	
32.	Таргагазов Ю. Т.	с. Чуи	0707 32 6733	
33.	Самболов А. С.	с. Ак-Бешим	0701 106030	
34.	Валиев мух. Ш.	Сайлык №0	0556 919 104	
35.	Борухонджиев Ш.	с. Ак-Бешим	0559 081051	
36.	Мирзабеку Сарамат	Чуи а/о	0701 9423 22	
37.	Бекбаев Эркинбек	с. Ак-Бешим	0702748132	

2

№	ФИО	Должность	Контактные данные/телефон	Подпись
38.	Асаналиев. Ш. А.	с. Сайлык	0709 745441	
39.	Умарбеков Ш. И.	с. Виноградное фермер	0500210173	
40.	Бактуров А.	с. Чуи	0705 77 88 82	
41.	Майиев У.	с. Сайлык	0708 16 19 33	
42.	Валиева А.	с. Чуи	0500714915	
43.	Корнеева Ч.	с. Чуи	0570215687	
44.	Клишиев мух. Асан	с. Саяс	0708520556	
45.	Карагулов Тилек	с. Чуи	0707697855	
46.	Мирзабеков Сарамат	с. Саяс		
47.	Маматов Баракан	с. Ак-Бешим	0703777397	
48.	Маматов Рустам	с. Ак-Бешим	0551 544633	
49.	Доманалиев Турган	Чуи а/о	0709 697979	
50.	Дамиев мух. Т.	Чуи а/о	0700 04 6565	
51.	Мухаммедов Бахромбек	Директор АБИТ	0700864857	
52.	Султоналиевов Т.	През. сел. АБИТ, АББ	0555952402	
53.	Умаров Т.	Директор АБИТ, Ак-Бешим	0700 858708	
54.	Умаров Л. Т.	Фин. СК АБИТ, Ак-Бешим		
55.	Назаралиев Р. О.	с. Ак-Бешим	0705233832	

Translation of:
Minutes of meeting on Public Consultation of 10.06.2021.

Minutes of
Public Discussions/Hearings on Project
Environment and Social Impact Assessment (ESIA)
« Climate Change and Disaster Resilient Water Resources Project – Osmon Subproject»

Date and time: June 10, 2021, 10-00 a.m.

Location: Tokmok city, meeting room of Chui district, Chui region

In public hearings, organized for discussions of Ecologic and Social Project Assessment and Environmental and Social Management Plan, took attendance (list and signatures of participators is attached):

From PIC side:

Shaban Chimen, International Expert on EM,
Kyial Dzhankorozova, interpreter
Zhanybek Orozaly uulu, National Consultant on EM
Narina Kydyralieva, National Consultant on Social Issues
Kalyibel Zhunusbaev, PIU
Local execution authority, RVK
Public representatives and residents of the district

Materials of hearings: Information brochures in Russian, Information presentations on EIA and RAP

A. Yuldashev. – CDT facilitator on Osmon s/p opened the public hearings, introduced participants and Zhakeev Zhyrgalbek Turgunbekovich, Chui Region Akim made welcoming speech.

Zhakeev Zh.T. – Chui region Akim: Dear participants, let me introduce myself since I have been working a little while ago. I have come in the result of staff turnover. Before, I worked as Akim of Ak-Syi district of Jalal-Abad region. Since taking up the post, I have been conducting study tours in all AOs of the district and I see that the irrigation system of the district is in a poor condition. The Osmon Canal is very important for the irrigation of the area; therefore it is in our interest to implement this project effectively in order to increase crop yields and farmers' incomes. The feasibility study is at the stage of completion, I urge all water users to be actively involved in the implementation process. In previous years, due to high corruption, funds allocated for the rehabilitation of irrigation systems were used ineffectively, therefore, public confidence was undermined. Considering the recent changes in the policy of the country's leadership, it is necessary to carry out all work as openly and transparently as possible. I wish you good luck with your project!

Shaban Chimen – International Consultant on Environmental Management:

Before starting my speech, I want to thank the local authorities for their support in organizing the public hearings. As I understood from the speech of the Akim and the present water users, the issue of irrigation water is very acute in the region. Well, this problem is also related to climate change and covers the whole world, so the Government of the Kyrgyz Republic turned to ADB for support. The facilities and sites included in the feasibility study are based on an assessment of the needs of the WUAs, RVK and SAWR, and the highest priority sites are included. Environmental and social impact assessments and mitigation measures were also carried out. The national consultants for the project will now speak on these issues, and we are here to hear questions on environmental and social issues.

Farmer: What is the project implementation period? When will rehabilitation works start? Effective life after facilities commissioning

Zhunusbaev K. – PIU Safeguards Specialist: The project initiated its activity in 2020 and is designed for 5 years, in addition to the Osmon canal, three canals in the southern regions are also included, one canal in each region. Rehabilitation works will start according to the work schedule after the completion of the detailed design and its approval in the authorized state structures, approximately in 2022. After the completion of the modernization / rehabilitation works, the facilities will be commissioned to RVK and WUAs, then it will depend on how efficiently and sustainably they will be operated.

Orozalu uulu Zhanybek – Temelsu national consultant on EM made Presentation on environmental aspects.

Kydyralieva N., Temelsu national consultant on gender and social issues during her presentation presented to participants ADB Provision on safeguards, Project's social goals and probable social consequences during the construction period and said about mitigation measures.

Water user: Why we must wait so long for construction works? We have almost desponded.

Sokeev T.S. – Head of District Agriculture Administration: We were not ready to fulfil the requirements and criteria for selecting the project, WUAs did not work, the project spent a lot of time and effort on activating, re-registering WUAs, and increasing confidence in WUAs.

Kydyralieva N., Temelsu Consultant: I would also like to draw your attention to the fact that women should also receive benefits from the project. It is necessary to increase the representation of women in WUAs and WUAs structures; women must also participate in all WUAs training activities. Women contribute to the production of agricultural products, especially in your area. They traditionally grow vegetables and greens; therefore, they also need to irrigate their plots and must have opportunities in the process of making decisions on water use.

Jumaev Kalybek- CDT Agriculture Specialist: since our WUAs were inactive, and we had to activate them, trust in WUAs was undermined in the past due to ineffective management, corruption, now we are working to attract women to training events, then we plan to introduce the most active ones into WUA structures.

Kydyralieva N.N. -National Social Specialist, MMTS - welcome, acquaintance, presentation on ADB Safeguard Policy and the project's requirements on gender criteria.

Question: WUA "Karagul Ata" What about trees along the canal? Can they be cut down? To start construction work on on-farm networks.

Answer, Zhunusbayev Kalybek, PIU Safeguard Specialist: when we start surveys and selection of sites on on-farm networks, we will approach each such case individually and assess the situation. All issues will be resolved within the framework of the legislation of the Kyrgyz Republic and the ADB Safeguard Policy.

Question, WUA "Ak Beshim Suu": since in the past WUAs undermined the confidence of water users, now the population is also suspicious of all actions. What to do in controversial moments? Where to contact?

Answer, N. Kydyralieva, consultant, MMTS: look at the presentation: here is the already established Grievance Redress Mechanism. Each AA has a Local Coordinator on Grievance, and in your sub-project (Osmon) these are the village leaders. Each resident can contact the LCG for any questions that have arisen and register his complaint, if the complaint is not resolved at the local level, then it will be resolved at the level of Subproject Coordination Committee that was established on 04.06.2021. This SCC will resolve controversial issues, complaints. In addition, the information brochure, which is available in the distribution folders, includes all the information and contact details of the Project implementer and the Consultant.

Completion of Public Hearings:

Sokeev T.S., representative of the RSA: dear participants of the PH, let me thank the consultants on your behalf for the information provided. Today's meeting showed how much the farmers need to implement the modernization / rehabilitation works as soon as possible. Therefore, I urge the participants to share the information received with their neighbours, fellow villagers. We will work together on minor issues, all state and local authorities will try to solve as transparently and efficiently as possible, to prevent conflicts and at a high organizational level.

Janybek Orozalu uulu Environmental protection specialist, thanked the participants for their active work and participation, and summarized the minutes of the meeting with a list of questions, comments and proposals on the EIA documentation received during the meeting, indicating their authors and answers to them and the total number of participants in the meeting.

Following the results of hearings

TAKEN THE DECISION

To form an agreed proposal from the initiator of the project, the contractor, and the local community - on the possibility and feasibility of implementing the planned activity on the proposed territory based on the environmental, social and other consequences of its implementation.

Протокол
Общественных обсуждений/слушаний по проекту
Оценка воздействия на окружающую среду (ОВОС)
«Повышение устойчивости водных ресурсов к изменению климата и стихийным
бедствиям – подпроект по каналу Сапарбаева»

дата и время: 11 ноября 2020 года, 10-00 часов

место: зал заседаний Кок-Жар А/о Ноокатского района Ошской области

В общественных слушаниях, организованных для обсуждения, Экологической и Социальной оценки проекта и Плана управления окружающей и социальной средой приняли участие (список участников прилагается):

От Консультанта:

Шабан Чимен, международный эксперт по ООС

Морозова Ю., Офис менеджер

Орозалы уулу Ж., национальный консультант по ООС

Кыдыралиева Н., национальный консультант по социальным вопросам

Масалбеков Р. ОРП

Жунусбаев К. ОРП.

Местная исполнительная власть

Общественность и жители района

Материалы слушаний: Информационные буклеты на кыргызском и русском языках, Информационные презентации по ОВОС и ПДП.

Открыл слушания начальник РУВХ Ноокатского района, который дал информацию о технических аспектах подпроекта, о селевых явлениях, незаконность захвата земель.

Слушание открыл международный эксперт по охране окружающей среды Шабан Чимен, который кратко рассказал об истории старта проекта.

Далее ВЫСТУПИЛИ

Масалбеков Р. от Заказчика рассказал о проекте и о текущем статусе реализации проекта.

Орозалы уулу Ж.

Специалист по охране окружающей среды, выступил с презентацией ОВОС и Плана Управления окружающей средой (ПУОС).

В выступлении кратко были освещены вопросы:

- Требования природоохранного законодательства Кыргызской Республики, по экологической оценке, проектов;
- Требования Операционной политики АБР, по экологической оценке,
- Содержание ОВОС;
- Компоненты окружающей среды, которые могут быть подвержены воздействию в ходе реализации проекта;

- Воздействие на окружающую среду от альтернативных вариантов;
- План управления окружающей средой и меры смягчения, которые предложены в ПУОС.

Кыдыралиева Н.Н.

специалист по социальным вопросам выступила с презентацией, по социальной оценке, проекта на население.

В презентации были освещены вопросы возможного социального воздействия в ходе строительства и эксплуатации и были даны рекомендации для принятия мер по их смягчению.

Вопросы и ответы

На все поступившие вопросы были предоставлены полные и исчерпывающие ответы.

Вопросы:

1. На каком сайте мы можем получить информацию по экологическим вопросам?
2. Селе хранилища – как мы можем включить в проект?

Ответ: Начальник РУВХ

Надо отремонтировать канал. Лотки и участки сделаны из, захваченные земли/заборы, когда была местная регистрация, была выделена земля в водоохранной зоне.

Вопрос. Директор АВП «Абшыр-Таны». Что будем делать с вопросом ограждений и насаждений внутривладельческих каналов?

Ответ: Руководству АВП Совместно со специалистами землеустроителей АО и юристом предстоит провести обезд и выявить случаи незаконных посадок, заборов, разъяснить жителям незаконность своих действий и потребовать сноса. и резка, чтобы иметь возможность эффективно управлять каналами.

Вопрос. Пакердилов. Кто рассмотрит жалобы?

Ответ. Масалбеков Р. ОРП. Будет составлена комиссия по жалобам. Они и будут рассматривать этот вопрос. Все жалобы, связанные с проектом должны решать Айыл окмоту. Вопросы финансирования будет решать независимая комиссия.

Вопрос о финансировании должен решать РУВХ.

Ответ Жунусбаев К. ОРП.

наш метод таков – в местах где в начале есть спорные моменты, эти участки не рассматриваются. Если эти спорные моменты не решаются Проект не осуществляется. У каждого канала есть зона в 25-50 метров. Кто влезает в эту зону, этот вопрос рассматривает РУВХ, айыл окмоту.

Ответ. Начальник РУВХ. Нужно разъяснить людям о полезности проекта для общественности, поэтому надо сейчас через Айыл окмоту и АВП, активных граждан донести информацию до населения, чтобы избежать конфликта и жалобы в строительный период. Поэтому в зимний период надо подготовиться к проекту. Надо водоохранные зоны внутривладельческих каналов очистить от посадок и деревьев.

Вопрос. Арипова Гулипа, Кок-Жар А/О. Бытовые отходы, деревья, плоды забивают канал. Айыл окмоту, глава айыл окмоту, депутаты не работают. Селе отводящие каналы в плохом состоянии. Сейчас работают над Т/ЗО, чтобы решить эту проблему. Наши земельные доли заболачиваются, заливаются.

Ответ. Начальник РУВХ. Возьмем во внимание вашу проблему.

Вопрос. Имаралиева Ж. посадку деревьев по каналу надо запретить или регулировать.

Ответ. Масалбеков Р. Вопросы на уровне аю должны решаться совместно, ОРП готово помочь.

Завершение общественных слушаний

Специалист по охране окружающей среды Орозалы уулу Ж. поблагодарил участников за активную работу и участие, а также подвел итоги протокола встречи с перечнем вопросов, замечаний и предложений по документации ОВОС, полученной в ходе встречи, с указанием их авторов и ответов на них. цх и общее количество участников собрания.

По результатам слушаний было принято решение:

Сформировать согласованное предложение от инициатора проекта, подрядчика и местного сообщества - о возможности и целесообразности реализации запланированных мероприятий на предполагаемой территории с учетом экологических и связанных с ними социально-экономических и иных последствий его реализации.

11.3. GRG establishment approvals

КЫРГЫЗ РЕСПУБЛИКАСЫ
НАРЫН ОБЛУСУ
КОЧКОР РАЙОНУ

САРЫ-БУЛАК
АЙЫЛ АЙМАГЫНЫН
АЙЫЛ ОКМОТУ



КЫРГЫЗСКАЯ РЕСПУБЛИКА
НАРЫНСКАЯ ОБЛАСТЬ
КОЧКОРСКИЙ РАЙОН

АЙЫЛ ОКМОТУ
САРЫ-БУЛАКСКОГО
АЙЫЛЬНОГО АЙМАКА

Б У Й Р У К П Р И К А З

13.11.2023-жыл, № 3

Ак-Кыя айылы

Сары-Булак айылына Кыргыз агрометке карантуну объектилеринин курдуунинтерин эффективдүү ишке ашырууга талаш-тартыштарды чечүүчү топту түзүү жөнүндө

Азия өнүктүрүү банкынан (АОБ) «Суу ресурстарынын климаттын өзгөрүүсүнө жана табигый кырсыктарга туруктуулугун жогорулатуу» долбоорунун алкагында, Нарын облусунун Кочкор районундагы Сары-Булак айылына Кыргыз агрометке карантуну жана курдууну гидрологиялык постунун курдуунинтерин эффективдүү ишке ашырууга карата талаш-тартыштарды чечүүгө карата жумушчу топту түзүү максатында **буйрук кылам:**

1. Аталган долбоорду ишке ашыруу учурунда ар-кандай социалдык маселелерди жана талаш-тартыштарды чечүү үчүн, Сары-Булак айыл окмотунун кызматчылары жана Кыргыз агрометтин кызматкерлеринен турган төмөндөгүдөй куралда жумушчу топту түзүлсүн:

- | | |
|---------------------|---|
| 1. Т. Абдыкеримов | Сары-Булак айылынан айыл башчысы, жумушчу топтун төрагасы; |
| 2. Б. Муратбек кызы | айыл окмотунун жер, турак-жай коммуналдык маселелер, муниципалдык менчик жана айыл чарбасы боюнча жетектөөчү д.и.и.и. жумушчу топтун катчысы; |
| 3. Д.С. Жашев | «Кочкор» агрометеорологиялык постунун техника-агрометеорологу, жумушчу топтун мүчөсү. |

2. Долбоордун ар-кандай маселелери боюнча доо-арыздар катталса, жумушчу топ өз ишмердигинин негизинде 3 (үч) күндүк мөөнөттө жүргүзүлгөн иштери тууралуу протокол түзүлсүн.

3. Бул буйруктун аткарылышын коомолдоо жагын ошүмө калтырмын.

Башчы



Э.О. Макашов,

КЫРГЫЗ РЕСПУБЛИКАСЫ
НАРЫН ОБЛУСУ
КОЧКОР РАЙОНУ



КЫРГЫЗСКАЯ РЕСПУБЛИКА
НАРЫНСКАЯ ОБЛАСТЬ
КОЧКОРСКИЙ РАЙОН

КАРА-СУУ
АЙЫЛ АЙМАГЫНЫН
АЙЫЛ ӨКМӨТҮ

АЙЫЛ ӨКМОТ
КАРА-СУУЙСКОГО
АЙЫЛНОГО АЙМАКА

Б У Й Р У К

12 . 01 2023-ж. № 3^б

Мангыш айылы.

Кара-Суу айыл аймагында “Суу ресурстарынын климаттын өзгөрүүсүнө жана табигый кырсыктарга туруктуулугун жогорулатуу” долбоорунун алкагында жумушчу топ түзүү жөнүндө

Азия өнүктүрүү банкынын (АӨБ) «Суу ресурстарынын климаттын өзгөрүүсүнө жана табигый кырсыктарга туруктуулугун жогорулатуу» долбоорунун алкагында, Нарын облусунун Кочкор районундагы Кара-Суу айыл аймагында Кыргызгидрометке караштуу жаны ачылып жаткан гидрологиялык посторунда курулуш иштерин эффективдүү ишке ашыруу үчүн талаш-тартыштарды чечүүчү топ түзүү максатында буйрук кылам:

1. Аталган долбоорду ишке ашыруу учурунда ар кандай социалдык маселелерди жана талаш-тартыштарды чечүү үчүн, Кара-Суу айыл өкмөтүнүн жана Кыргызгидрометтин кызматкерлеринен төмөнкү курамындагы жумушчу топ түзүлсүн:

- М.Акынбеков топтун төрагасы
- О.Чоюбеков, топтун катчысы
- Д.С.Жапсаров «Кочкор» агрометеорологиялык постунун техник-агрометеорологу, топтун мүчөсү.

2. Долбоордун ар кандай маселелери боюнча доо-арыздар катталган жумушчу топ өз ишин 3 (үч) күндүн ичинде алып барсын жана алып барган ишин боюнча протокол түзүлсүн.

3. Бул буйруктун аткаруу жагы башкы эсепчи Н.Исаковага милдеттендирилсин.

Башчы



Б. Садыков

Жиберилисн: иш кагазына.



ТЕСКЕМЕ
РАСПОРЯЖЕНИЕ

2023-жыл 13-февраль №16

Кайынды а.

Кыргыз Республикасынын Өзгөчө кырдаалдар министрлигине караштуу Гидрометеорология боюнча агенттиги Чүй дарыясынын бассейниндеги суу ресурстарынын жалпы көлөмүн мамлекеттик деңгээлде көзөмөлгө алуу аткаруу максатында Карагайлууга гидропост салуу учурунда калк менен пикир келишпестиктерди алдын алуу максатында төмөнкү курамда жумушчу топ түзүлсүн

1. Мамбетов М -жоопту катчы,төрагасы
2. Сыдыков Т. –жер адис,мүчөсү
3. Абдылдаев Н.-Кайынды айылынын айыл башчысы,мүчөсү
4. Исаков Т- аймактык тескөөчү
5. Чечейбаев С.- ак сакалдар соту

Коомдук тартипти камсыз кылууну көзөмөл кылышсын.

Башчы

Абдыкадыров Ш.К.

КЫРГЫЗ РЕСПУБЛИКАСЫ
ЧҮЙ ОБЛУСУ
КЕМПИН РАЙОНУ
КЫЗЫЛ-ОКТЯБРЬ АЙЫЛ
АЙМАГЫНЫН
КЫЗЫЛ-ОКТЯБРЬ АЙЫЛ
ӨКМӨТҮ



КЫРГЫЗСКАЯ РЕСПУБЛИКА
ЧУЙСКАЯ ОБЛАСТЬ
КЕМПНСКИЙ РАЙОН
КЫЗЫЛ-ОКТЯБРЬСКИЙ АЙЫЛ
ОКМОТУ
КЫЗЫЛ-ОКТЯБРЬСКОГО
АЙЫЛНОГО АЙМАКА

724514, Кызыл-Октябрь а., Пионер к. 8
Тел: (03135)59376, (03135)59238
факс: (03135)59216
ЖИИ 01511199610128
КР ФМ Борбордук кызматы
р/с 4403041251007032
БИК 440001

724514, с. Кызыл-Октябрь, ул.Пионерская 8
Тел: (03135)59376, (03135)59238
факс: (03135)59216
ИНН 01511199610128
Центральное агентство МФ КР
р/с 4403041251007032
БИК 440001

№ _____

На №08/28 от 2023 ж. 11 январь

Кыргыз Республикасынын
Өзгөчө кырдаалдар министрлиги
гидрометеорологиялык кызматы

Кызыл-Октябрь айыл өкмөтү Сиздерден келген № 08/28 2023-жылдын 11-январындагы катка жооп берет: Кыргыз Республикасынын Өзгөчө кырдаалдар министрлигине караштуу Гидрометеорология кызматынын “Чүй дарыясы-Чолок айылы” гидрология постунда “Суу ресурстарынын климаттын өзгөрүүсүнө жана табигый кырсыктарга туруктуулугун жогорулатуу” долбоорунун алкагында жумушчу топ түзүлдү.

Тиркеме 1: Талаш-тартыш чечүү боюнча жумушчу топтун буйругу.

Башчы

Т.А.Асанов

ДОКУМЕНТ ПОДПИСАН
ЭЛЕКТРОННОЙ ЦИФРОВОЙ ПОДПИСЬЮ

R3 Nt yI ug w2 Bb 0l 94 46 5R 0B e0 q8 P7 sJ zF
68 mJ oF vF JA Ip Ke ul Y6 7a SX Z4 c8 rF IP tC
Владелец: Курманалиева Гульназ Шаршеналиевна
Действителен с 07.02.2022 по 07.02.2023

КЫРГЫЗ РЕСПУБЛИКАСЫ
ЧҮЙ ОБЛУСУ
ЫСЫК-АТА РАЙОНУ



СЫН-ТАШ АЙЫЛ АЙМАГЫНЫН
СЫН-ТАШ АЙЫЛ ӨКМӨТҮ

725028 Тельман айылы
Школьная көчөсү №32
Телефон: +996(3132)7-01-05
Факс: +996(3132)7-01-02
E-mail: syntash.ao@mail.ru
р/с 4403021001001486
Борбордук калына
ОКПО коду 04509976
БИК 440302
ЖИН 00209199210156

КЫРГЫЗСКАЯ РЕСПУБЛИКА
ЧУЙСКАЯ ОБЛАСТЬ
ЫСЫК-АТИНСКИЙ РАЙОН

СЫН-ТАШСКИЙ АЙЫЛНЫЙ АЙМАК
СЫН-ТАШСКОГО АЙЫЛ ОКМОТУ

725028 село Тельман
ул. Школьная № 32
Телефон: +996(3132)7-01-05
Факс: +996(3132)7-01-02
E-mail: syntash.ao@mail.ru
р/с 4403021001001486
Центральное казначейство
Код ОКПО 04509976
БИК 440302
ИНН 00209199210156

БУЙРУК

11.01.2023-жыл, №13-б

Тельман кыштагы

Азия өнүктүрүү банкынын “Суу ресурстарынын климаттык өзгөрүүсүнө жана табигый кырсыктарга туруктуулугун жогорулатуу” долбоорунун алкагында Сын-Таш айыл аймагында Кыргызгидрометке караштуу объектилеринин курулуш иштерин эффективдүү ишке ашыруу максатында талаш-тартыштарды чечүүчү топту түзүү жөнүндө.

Азия өнүктүрүү банкынын (АӨБ) “Суу ресурстарынын климаттык өзгөрүүсүнө жана табигый кырсыктарга туруктуулугун жогорулатуу” долбоорунун алкагында, Чүй облусунун Ысык-Ата районундагы Сын-Таш айыл аймагында, Кыргызгидрометке караштуу курулуш иштерин эффективдүү ишке ашыруу максатында талаш-тартыштарды чечүүчү топту түзүү жөнүндө, Сын-Таш айыл өкмөтү буйрук кабыл алат:

1. Аталган долбоорду ишке ашыруу учурунда ар-кандай социалдык маселелерди жана талаш-тартыштарды чечүү үчүн, Сын-Таш айыл өкмөтүнүн жана Кыргызгидрометтин кызматкерлеринен төмөнкү курамындагы жумушчу тобу түзүлсүн:
 - Миржан Таубековна Бексултанова -Сын-Таш айыл өкмөтүнүн жооптуу катчысы, топтун төрагасы.
 - Туратбек Аманкулович Арипов -Сын-Таш айыл өкмөтүнүн башкы адиси, топтун катчысы.
 - К.К.Джумабаев- “Ысык-Ата” метеорологиялык станциясынын башчысы, топтун мүчөсү.
2. Долбоордун ар кандай маселелери боюнча доо-арыздар катталса, жумушчу топ өз ишин 3 (үч) күндүн ичинде алып барсын жана алып барган иши боюнча протокол түзүлсүн.
3. Буйруктун аткарылышын көзөмөлдөө жагын өзүмө калтырам.
4. Бул буйрук тиешелүү тараптарга жеткирилсин.

Башчы:



М.Т.Джолдошев



ТЕСКЕМЕ
РАСПОРЯЖЕНИЕ

17.01.2023 № 6

Байтик айылы
с. Байтик

Азия өнүктүрүү банкынын «Суу ресурстарынын климаттын өзгөрүүсүнө жана табигый кырсыктарга туруктуулугун жогорулатуу» долбоорунун алкагында Байтик айыл аймагында Кыргызгидрометке караштуу объектилеринин курулуш иштерин эффективдүү ишке ашыруу максатында талаш-тартыштарды чечүүчү топту түзүү жөнүндө

Азия өнүктүрүү банкынын (АӨБ) «Суу ресурстарынын климаттын өзгөрүүсүнө жана табигый кырсыктарга туруктуулугун жогорулатуу» долбоорунун алкагында Байтик айыл аймагында Кыргызгидрометке караштуу объектилеринин курулуш иштерин эффективдүү ишке ашыруу максатында талаш-тартыштарды чечүү максатында

1. Аталган долбоорду ишке ашыруу учурунда ар кандай социалдык маселелерди жана талаш-тартыштарды чечүү үчүн, Байтик айыл өкмөтүнүн жана Кыргызгидрометтин кызматкерлеринен төмөнкү курамдагы жумушчу тобу түзүлсүн:

1. Муктарканов Б.М. - Байтик айыл өкмөтүнүн жарандык коргоо жана инвестиция тартуу боюнча адиси - топтун төрагасы;

2. Ашакеева С.Э. - Байтик айыл өкмөтүнүн юристи, топтун катчысы;

Мүчөлөр:

3. Кулуңтаев А.А. - «Байтик» метеорологиялык станциясынын башчысы;

4. Керимакунов А.Т. - Кашка-Суу айылынын айыл башчысы;

5. Джумагулов А.М. - Байтик айылдык кенешинин депутаты.

2. Долбоордун ар кандай маселелери боюнча доо арыздар катталса, жумушчу топ өз ишин 3(үч) күндүн ичинде алып барсын жана алып барган иши боюнча протокол түзүлсүн.

3. Бул тескеменин аткарылышын көзөмөлдөө жагына өзүмө калтырам.

4. Бул тескеме тиешелүү жеткирилсин.

Башчы



А. Абдыразаков

11.4. Sub-project Coordination Committee meeting

MINUTES

Of the meeting on establishment of Subproject Coordination Committee for Osmon SP

Tokmok city

June 4, 2021

Participants:

1. Masalbekov R. – PIU Specialist
2. Dzhankorozova K. – PIC Translator
3. Yuldashev A. – Osmon CDT Manager
4. Usenbek uulu M. - farmer
5. Mambetov T. – Chui RVK Head Specialist
6. Sharipov T. – “Ak-Beshim-Suu” WUA Director
7. Karagodiey A. – Osmon CDT Facilitator
8. Mukan uulu B. – “Fi-Lun” WUA Director
9. Usubaliyeva B. – Head Specialist on land issues of Chui AO
10. Jumaev I. – Chui CDT specialist
11. Abdyrahmanov M. – “Karagul-Ata” WUA Director
12. Tursunaliyev B. – Head of Sailyk AO
13. Sulaimanov U. – Chui RVK Head Engineer
14. Ishenaliyev U. – Acting Land Specialist
15. Jekshen uulu A. – Chui AO Head Deputy
16. Shapiyanov B. – Ak-Beshim AO Land Specialist
17. Tynaliyev N. – Head of Chui RVK

Agenda:

Establishment of Subproject Coordination Committee (SCC) for Osmon Subproject, Chui district, Chui region.

Speakers:

Head of Chui RVK suggested to elect the Chairperson of meeting and Masalbekov R. Was elected. And Dzhankorozova K. Was elected as the secretary. By consensus decision the Chairperson and Secretary were elected.

PIU specialist Masalbekov R. said in detail on goals and objectives of “Climate change and disaster-resilient water resources sector” Project ADB. Also he mentioned that Osmon canal that is located in Chui region was included in project for modernization, rehabilitation and reconstruction of water. On each water outlet of each WUA control and measurement equipment will be installed, both RVK and WUAs will be provided by computers in order to keep records of water transparently. Within this Project SCC are established in each subproject. To ensure that all issues related to increasing the resilience of the Osmon Canal to climate change and natural disasters, and issues of improving and enhancement the effective management of the irrigation system are discussed, decisions are made and recommendations are made on behalf of the SCC.

Also, R. Masalbekov noted that it is very important to resolve all issues together. The work of the SCC will continue until the completion of the Project, but after the completion of the Project, the SCC will continue to operate.

Osmon canal passes through 4 Ayyl Qkmotu. And there are very serious questions about the location of some of the houses in relation to the Osmon Canal. There are houses whose plots are very close to the canal. The Osmon canal is inter-farm and there should be 6 meters of red zone on both sides of the canal. When we start to improve these sections of the canal, there will be conflicts with the

residents of these houses. And we will be able to solve these issues only with the help of Aiyi Qkmotu and therefore, Aiyi Qkmotu should contribute to this work.
R. Masalbekov raised the issue of establishing the SCC under the Osmon sub-project and on the election of the Chairman, Secretary, Deputy Chairman and members of the SCC. The following candidates were proposed:
Chairman of the SCC - Dzholdoshaliy I.A., representative of the PIU,
Deputy Chairman of the SCC - N. Tynaliy, representative of the Chui RVK,
Secretary of the SCC - K.K. Dzhankorozova, representative of the PIC,
and SCC members:
1) From RVK - 3 specialists
2) From WUA - 3 specialists (WUA Directors)
3) From Aiyi Qkmotu - heads of four AOs and land management specialists: 8 people.
4) From the CDT - 3 specialists
After heated discussions, the meeting participants decided:

DECISION

1. Establish Subproject Coordination Committee for Osmon Subproject.
2. Prove SCC members in the following structure:
SCC Chairman – I.A. Zholdoshaliy
Deputy Chairman – N. Tynaliy
SCC Secretary – K. Dzhankorozova

SCC Members:

1. Masalbekov R.
2. Yuldashey A.
3. Mambetov T.
4. Sharipov T.
5. Karagojoev A.
6. Mukan uulu B.
7. Usubaliyeva B.
8. Jumaev I.
9. Abdyrahmanov M.
10. Tursunaliyev B.
11. Sulaimanov U.
12. Jekshen uulu A.
13. Shapiyanov B.
14. Ishenaliyev U.

Meeting Chairman: _____ R. Masalbekov

Secretary: _____ K. Dzhankorozova

11.5. Grievance registration form

Name of Person Raising Grievance: (information is optional and always treated as confidential) Gender: <input type="checkbox"/> Male <input type="checkbox"/> Female				
Address or contact information for Person Raising Grievance: (information is optional and confidential) E-mail: Phone: Address:				
Location where grievance/problem occurred (write in)				
Oblast:		Rayon:		Village/ Mahalla
Category of Grievance:				
<input type="checkbox"/> Inclusion in LARP	<input type="checkbox"/> Compensation Rate	<input type="checkbox"/> Restriction or loss of access	<input type="checkbox"/> Crop Compensation	<input type="checkbox"/> Loss of business
<input type="checkbox"/> Registration / Ownership Status	<input type="checkbox"/> Disturbance: Noise / Vibration / Dust	<input type="checkbox"/> Damage to Infrastructure / Assets	<input type="checkbox"/> Utilities Relocation	<input type="checkbox"/> HSE Concerns
<input type="checkbox"/> Recruitment / Employment	<input type="checkbox"/> Canal Upgrading	<input type="checkbox"/> Appreciation	<input type="checkbox"/> Suggestions	<input type="checkbox"/> Other
Brief Description of Grievance or Inquiry: (provide as much detail and facts as possible)				
Please include any other information that you consider relevant, other matters or facts, including supporting documents:				
Do you request that identity be kept confidential? <input type="checkbox"/> Yes <input type="checkbox"/> No				
2. Previous Efforts to Resolve the Complaint				
3. Information on Authorized Representative. (If Authorized Representatives are not complainants themselves, their names will be disclosed as needed, in order to ensure transparency).				
Name	Positions/Organizations	Addresses	Contact numbers	E-mail addresses
Gender: <input type="checkbox"/> Male <input type="checkbox"/> Female				
Please provide evidence of the authority to represent the complainant which must include the complainant's signature.				
Do you request that identity be kept confidential? <input type="checkbox"/> Yes <input type="checkbox"/> No				
Name of the person who completed this form: Signature: Date:		Please send the complaint to: By letter post: Grievance Redress Mechanism Attention to: Climate Change and Disaster Resilient Water Resources Sector Project, Project Implementation Unit 4 A Toktonaliev str. 720055, Bishkek, Kyrgyzstan Email: ccd-rwrsp@water.gov.kg Phone line: +996 (312) 561 637		

11.6. Grievance logbook

#	Project	Recipient	Date Received	Name & contact of Complainant	Complaint Category	Complaint Description	Resolution Description	Resolution	Resolution Date	Substantiated	Open	Days open	Comments
PIU COMPLAINTS LOG 2020-Present													
									16.Oct.2020				
1	CCD-RW RSP	PIU											
2													
3													
4													
5													
6													
7													
8													
9													
10													
11													
12													
13													
14													
15													
16													
17													
18													
19													
20													
21													
22													
23													
24													
25													
26													